

SYMPHOROSE OUAOUAGOUKOUÉ

AND THE ORIGIN OF
THE ILLINI



JOSEPH AMYOT PADJAN

SYMPHOROSE OUAOUAGOUKOUÉ AND THE ORIGIN OF THE ILLINI

JOSEPH AMYOT PADJAN

Symphorose Ouaouagoukoué and The Origin of the Illini

Copyright © 2015 by Joseph Amyot Padjan

All rights reserved. No part of this book, or paper, may be used or reproduced in any form or by any means without permission in writing from the publisher. For all inquiries:

josephamyotpadjan.com

SYMPHOROSE OUAOUAGOUKOUÉ AND THE ORIGIN OF THE ILLINI

The Clovis First theory had a good run, having been espoused by most American academics throughout the twentieth century; but it is now in its grave, where it belongs, having been beaten down by courageous archaeologists¹ who dug deeper than others, and deep enough to uncover in the Americas artifacts more ancient than Clovis could account for; and at last having met its end when DNA analysis entered the ring. Goodbye, Clovis. You will not be missed.

Now that we know that the Americas were first peopled many thousands of years earlier than the approximate Clovis date, let us turn our attention to Asia and Oceania, where at least twenty thousand years, and perhaps much longer than twenty thousand years ago, the ancestors of the Natives of the Americas began their migrations east, at the edges of the known world. They left there in waves, and got here in waves; some walked, perhaps the

¹ James Adovasio, *The First Americans: In Pursuit of Archaeology's Greatest Mystery* (Random House Publishing Group, 2009), pp. xiii-xiv; TD Dillehay, Ocampo C, Saavedra J, Sawakuchi AO, Vega RM, et al. (2015) New Archaeological Evidence for an Early Human Presence at Monte Verde, Chile. PLOS ONE 10(11): e0141923. <https://doi.org/10.1371/journal.pone.0141923>.

first, and some, perhaps the first, rowed or paddled. In whatever way they traveled here, their journeys ultimately ended in success, though certainly not without many fatalities along the way; and in this untrodden land that they found, they thrived, and their descendants flourished for many epochs and ages.

We are not concerned here with the question of who arrived first, the walkers or the boaters, but with the question of who the ancestors were of certain large tribes, or families of tribes, inhabiting the Americas; and in particular, the origin of the ancestors of the Algonquians.

The reason for my interest in the origin of the ancestors of the Algonquian tribes, is that I have three ancestors who were Algonquian, Marie Miteouamigoukoué, a member of the Algonquin tribe proper (the tribe that gave their name to the language family known as Algonquian, or Algic); Marie Mi'kmaq, a Mi'kmaq; and the one the origin of whose ancestors is the focus of this paper, namely, Symphorose Ouaouagoukoué, an Illini,² wife of my ancestor Jean-Baptiste Réaume, interpreter and fur trader.

I descend from Symphorose through my maternal grandmother Anne Amiot (Amyot) Lohman (née Raymond); and Anne descended from Symphorose through her paternal grandmother Mary Bondy (Douaire de Bondy). Mary was a matrilineal descendant of Symphorose; Mary inherited her mitochondrial DNA from her; but Mary got a double dose of Symphorose's genes. The reason is that Mary's parents, Thomas (Douaire de) Bondy and Matilda Samantha (Douaire de) Bondy (née [Douaire de] Bondy), who were second cousins

²

that had married, were both direct descendants of Symphorose Ouaouagoukoué. Symphorose was the third great-grandmother of Matilda Bondy as well as of Thomas Bondy, he having been descended from Symphorose through his mother Susanne Campau, who inherited her mitochondrial DNA from Symphorose.

Now, who were the ancestors of the Algonquians, and where did they come from? For answers to these questions, however satisfactory or unsatisfactory the answers may be, we can turn to three fields, archaeology, linguistics, and genetics; but since archaeology has certain limitations that make its answers to these questions likely to be vague rather than specific, linguistics and genetics must lead the way.

As for linguistic analysis, only the works of Professor John Campbell satisfy the condition of being relevant to the subjects of this discussion. In the latter half of the nineteenth century, Campbell himself set out to determine what language, or languages, outside the Americas, seemed most likely to be the antecedent, or antecedents, of those spoken by the Algonquians, that is, by the Algonquian-speaking tribes. To qualify himself for the task, he spent years acquiring a working knowledge of a multitude of languages. Campbell writes:

Numberless attempts have been made to find the Old World languages whose vocabularies are most in accordance with those of the Indian dialects. Even before the present century, comparative tables were drawn up, but many of these contained such scant and widely scattered materials as made them practically worthless. The examples could easily have been mere coincidences instead of illustrations of genuine relationship. This style of comparison has been carried on to the present day, and by its unscientific character has naturally created a prejudice among philologists and

ethnologists against all comparisons of mere words. A good deal of bigotry, however, has disgraced the writings of scientific men in their arguments against the possibility of an Old World connection for the languages of the New; and they have resolutely refused to weigh the evidence presented in coinciding vocabularies or to attempt to account for the phenomenon thus presented. On both sides, it appeared to me, that ignorance was the obstacle to agreement, an ignorance namely of the languages of the two hemispheres, both as regards their grammatical and verbal forms. I endeavoured therefore during several years to gain an acquaintance, imperfect, superficial, fragmentary to be sure, but still a general acquaintance, with all the known families of speech, so that I might have no temptation to form a theory and favor any one group of languages in such a way as to force a resemblance between it and others. Then proceeding to a comparison, the Indo-European and Semitic languages were necessarily counted out, as their structure is altogether different from that of the American. Then, in the great Turanian division, it was found unnecessary to compare the African languages pertaining to it, as their home is too remote from the region for which comparison was sought. The Monosyllabic languages of China, India and Indo-China, although Turanian, were excluded, because only one American language, the Otomi of Mexico, is known to be Monosyllabic. What does this leave us? In Europe we have the Basque of the Pyrenees, and, on the borders of Europe and Asia, many Caucasian dialects, both of which have much in common with some American forms of speech. Besides these, the two great divisions of the Asiatic Turanian languages call for attention. In the Southern, comprehending the Dravidian and other groups in Hindostan, Thibet and Indo-China, the American analogies are few, and, where they do appear, seem to rise into greater prominence in the Malay dialects which are sometimes classed as Turanian, and, of course, as belonging to this division. The Northern Turanian division includes the Finnic, Turkish, Mongolic and Tungusic classes, to which some writers add the Samoyedic of Archangel and Siberia. Many verbal resemblances appear between this group

and a number of American languages, but so far as grammatical forms are concerned, it is only as its languages present exceptions to Turanian order that they coincide with American grammar. It is true, therefore, only of some Mongolic and Tungusic dialects, and in particular, of the latter. There still remain two unclassified groups. One, in Central Siberia, is the Yenisei family; and the other, in the extreme East of Asia, extending from the Arctic Ocean to the Loo Choo Islands, may be termed the Japanese-Koriak. An isolated language is the Yukagir within the Koriak area. Of all the Asiatic languages, the Japanese-Koriak have the closest affinities to those of America. This I found for myself, but I need not have done so, for Dr. Latham long ago pointed out the fact. He says: "In the opinion of the present writer, the Peninsular (Japanese-Koriak) languages agree in the general fact of being more akin to those of America than any other." He also seems to think it easier to connect this family with America than with any other linguistic group of the Old World. The Caucasian dialects, the Basque, and the old Accad of Chaldaea have some of their closest analogies, however, with the Japanese-Koriak...

But here the present school of philology steps in, saying, and, within certain limits, saying rightly: —"You must attend to grammatical principles and not to mere forms of words, whose evidence is apt to be fallacious." The languages of America, we are told, agree among themselves and differ from all others, in being polysynthetic...

Professor Max Muller refuses to recognize a polysynthetic class of languages. He says: "The number of roots which enter into the composition of a word makes no difference, and it is unnecessary, therefore, to admit a fourth class, sometimes called polysynthetic or incorporating, including most of the American languages. As long as in these sesquipedalian compounds, the significative root remains distinct, they belong to the agglutinative stage; as soon as it is absorbed by the terminations, they belong to the inflectional stage." In this connection I may be permitted to quote the opinion of a distinguished student of Turanian languages, and one whose apparent sympathies are not in favour of a connection between the

languages of the Old World and the New. After an analysis of the grammatical systems of sixteen American languages, M. Lucien Adam says: —“In fact the preceding languages are all more or less polysynthetic, but this polysynthetism, which essentially consists in suffixing subordinate personal pronouns to the noun, the postposition and the verb, characterizes equally the Semitic languages, the Basque, the Mordwin, the Vogul and even the Magyar....” ...It appears, therefore, that not only polysynthetism, but that agglutination also of which it is an exaggerated form, are not separate forms of speech by which human families should be separated from one another, but, as Max Muller calls them, *stages in the development of language*, and thus accidents to which all languages are liable. Among the Malay-Polynesian tongues we find some in this stage, such as the Tagala: and such a language the Basque still remains in spite of its surroundings. It is, therefore, evident that no classification of peoples can proceed scientifically on the basis of such a mere accident as polysynthetism in language...

Is there then any grammatical peculiarity by which the languages of the Old World and the New can be connected? There are several such peculiarities, which are not complex, almost indefinable, and ever varying like polysynthetism, but simple, easily observed and pertaining to syntax as illustrative of psychological phenomena. These have been pointed out, and my attention has been directed to them, by Dr. Edkins, of Pekin, in his suggestive book “China’s place in Philology,” where he deals with them mainly as illustrating the diversity between the Turanian and Malay-Polynesian grammatical systems. The same diversity which Dr. Edkins illustrates in Asia finds the amplest illustration upon this continent. It consists primarily in a distinction, which may fitly give names to the classes, between *Prepositional* and *Postpositional* languages. The former generally employ prepositions to denote relation; the latter invariably make use of postpositions. Thus Finns and Turks, Mongols, Tungus, and Japanese, who are at liberty to present great varieties of agglutination tending to complete incorporation and polysynthetism, cannot, until the laws

of their thinking are changed, place the term denoting relation before the noun, or, in other words, by using prepositions put a determinative, abstract term before a concrete. In the case of Prepositional languages, the same difficulty does not appear. They can make use of postpositions occasionally. Such are found in German, in Latin, and to a large extent in Sanskrit. In our English word *heavenwards*, the latter part is the preposition *towards* abbreviated. A distinction, therefore, is to be drawn between languages, not as they make exclusive use of prepositions, on the one hand, and postpositions, on the other, but as they employ or do not employ prepositions. That this is a valid line of demarcation between forms of speech is evident from the fact that the two oldest languages known, the Egyptian and the Accad of Chaldaea, illustrate it, the former being a prepositional, the latter a postpositional language...

Standing alone this distinction in syntax would be important, but it does not stand alone. The mark of tense, or temporal index, bears the same relation to the verb that the mark of relation (preposition or postposition) bears to the noun. In the Turanian or postpositional languages this mark of tense is placed after the verbal root invariably, in some such form as the *ed* of the English past tense *loved* or the *rai* of the French future *aimerai*. But, in such prepositional languages as the Malay-Polynesian, the temporal index invariably precedes the verbal root, as in the *shall* of the English *I shall love*. Here again we have a psychological phenomenon, the preference by one branch of the human family of the temporal and determining, and by the other of the assertive and undetermined...

Of the languages now under consideration two, the Algonquin and the Chimsyan, are known to be prepositional. They exhibit at least three of the peculiar features of such languages in the use of prepositions, the preposition of the temporal index to the verb, and of the verb to its regimen. Other languages on the Pacific coast agree in these respects with the Chimsyan, but, in the East, the Algonquin dialects stand alone as the only representatives of the prepositional class. The Maya-Quiche family of Central America

is preposing and so are many languages of South America, such as the Kirriri of Brazil and the Mbaya-Abipone family of La Plata and Paraguay. To suppose that the Algonquin and Chimsyan languages are derived from Northern Asia, because, like the Koriak and Korean languages, they are polysynthetic, would be to make the Asiatic immigrant *completely invert his order of thought*. Their grammar is that of the great Malay-Polynesian stock and thus of the Asiatic languages with which this stock is related. If, therefore, the Algonquins and Chimsyans are Asiatic colonists on American soil, they must belong to the Malay-Polynesian family.³ [Italics added.]

The Algonquins, or Algonquians are, of course, originally from Asia, that is, Oceania; and, for reasons to be made clear below, I agree with Campbell: they must belong to the Malay-Polynesian family. In another paper, *Origin of the Salishan Tribes of British Columbia and Washington*, Campbell writes:

Seventeen years ago I exhibited, in a paper read before the Institute, the relation of the Algonquian dialects to that same Malay-Polynesian family. It is not easy to draw a line between what is Malay and what is Polynesian, either in grammatical forms or in vocabulary, yet the Algonquian dialects may be called more Malay than Polynesian. This appears most prominently in the word for man, which in Malay is *oran* or *ulun*, whence the Ilinoans of Borneo have their name. But in America the Delawares are the *lenni Lenape* or the Lenape men, the State of Illinois was so called after the Algonquian *Illeni*, and the Micmac [Mi'kmaq] calls himself *ulnool*, a man. The Polynesian, on the other hand, terms himself *tangata* or *tamata*, and that seems to be the original of the Salishan *tamihu*, *tamekhw*, *tumikh*, *temokh*, *tobesh*, and *stobush*. If,

³ John Campbell. "Origin of the Aborigines of Canada." Transactions of the Literary and Historical Society of Quebec, Sessions of 1880-81. Pages 61-93 ("Morning Chronicle" Office, 1880), pp. 65-74.

therefore, a line is to be drawn between Malay and Polynesian, it may be inferred that the Salishans are more Polynesian than Malay.⁴ [Brackets added.]

Thus on the basis of the Malay-Polynesian languages being prepositional ones, and inflecting their verbs for tense by the use of auxiliary verbs, and the Algonquian dialects corresponding to the Malay, in both their grammar and their vocabulary, and being completely unlike all other languages of the Old World, Campbell concludes that the Algonquians are Malay in origin.

Through Symphorose Ouaouagoukoué, my maternal grandmother Anne Lohman (née Raymond) is, in part, of Illini descent. She has no other known Native American ancestors. The mother of my maternal grandmother Anne was one hundred percent Jewish (Ashkenazic), and the father of my grandmother was thoroughly French (Lawrence Charles Raymond dit Toulouse), apart from his Illini ancestry.

Now, my maternal grandmother has had her autosomal DNA tested for genetic ancestry, and the results of her test are highly interesting. I will tell you right now that there is only one possible explanation for her having such strong matches with Malay and Polynesian peoples: her Illini ancestors, that is, the ancestors of Symphorose Ouaouagoukoué, were Malay.

In the following pages are the results of my maternal grandmother's autosomal DNA test. The date of her test and the date of the analysis updates are displayed at the bottom of the pages. Note also that the letter 'A.' in her name 'Anne A. Lohman' stands for 'Amiot (Amyot),' her first married name.

⁴ John Campbell. "Origin of the Salishan Tribes of British Columbia and Washington." Proceedings of the Canadian Institute. New Series. Volume I. Pages 39-50 (Henderson & Company, 1898), p. 40.

SYMPHOROSE OUAOUAGOUKOUÉ AND THE ORIGIN OF THE ILLINI



All materials copyright © 2006-2013 DNA Tribes. DNA Tribes®.
What's Your Tribe?®. DNA Tribes patented analysis is available exclusively
from DNA Tribes. U.S. PAT. NO. 8,285,486. All rights reserved.

Part A: Your Genetic Profile

CONFIDENTIAL INFORMATION: Below is your unique genetic profile used to identify your geographical ancestry. Because this profile identifies you personally, DNA Tribes® recommends that you treat the genetic profile on this page as strictly confidential information.

A reference to further information about these genetic markers is listed under Further Reading on Page 6 of this report.

Autosomal STR Profile

Anne A. Lohman

<i>Locus</i>	<i>Allele 1</i>	<i>Allele 2</i>
<i>Amel</i>	X	X
<i>D3S1358</i>	17	19
<i>TH01</i>	7	8
<i>D21S11</i>	30	32.2
<i>D18S51</i>	15	16
<i>Penta E</i>	12	15
<i>D5S818</i>	10	12
<i>D13S317</i>	9	9
<i>D7S820</i>	12	14
<i>D16S539</i>	9	11
<i>CSF1PO</i>	10	11
<i>Penta D</i>	8	13
<i>vWA</i>	17	19
<i>D8S1179</i>	13	13
<i>TPOX</i>	9	11
<i>FGA</i>	21	24

dnatribes.com - Customer support email: support@dnatribes.com

“Like” us at <http://Facebook.com/DNAtribes>

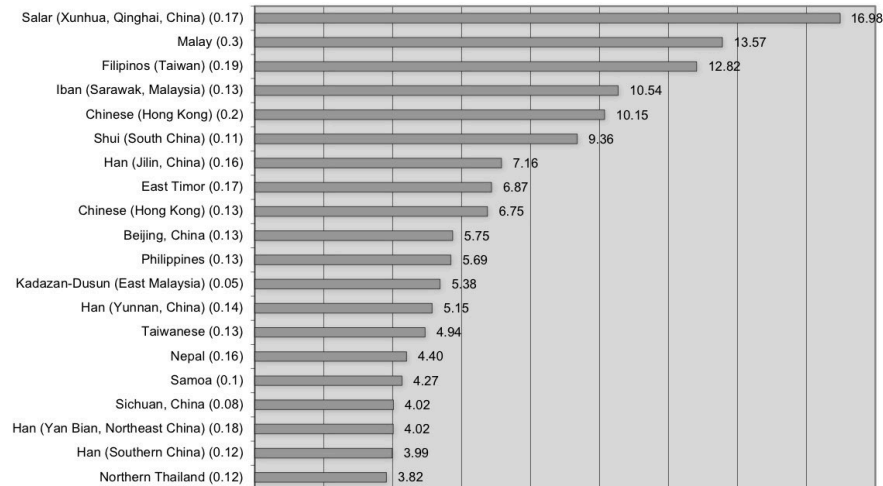
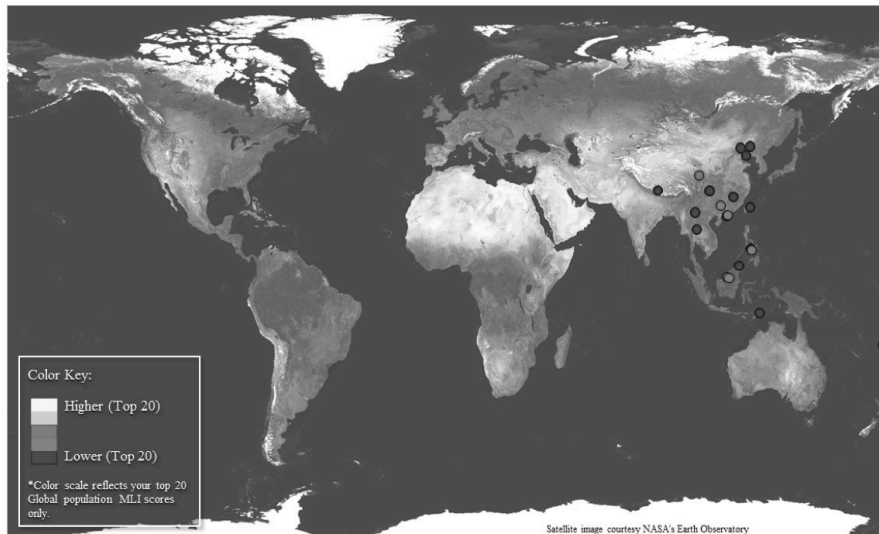
8/10/2013 - Page 7 of 10

SYMPHOROSE OUAOUAGOUKOUÉ AND THE ORIGIN OF THE ILLINI



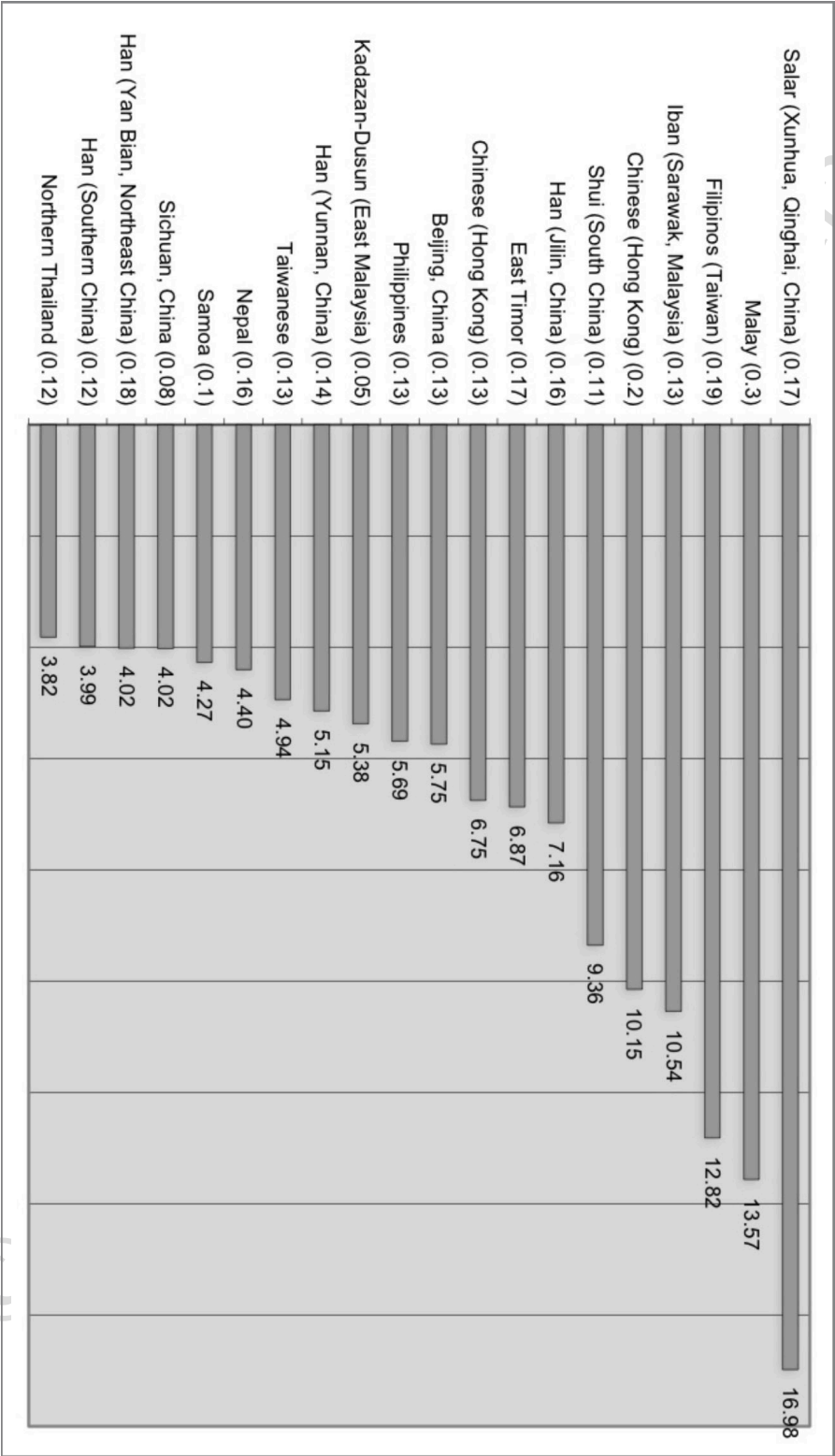
All materials copyright © 2006-2013 DNA Tribes. DNA Tribes®.
What's Your Tribe?®. DNA Tribes patented analysis is available exclusively
from DNA Tribes. U.S. PAT. NO. 8,285,486. All rights reserved.

Part B: Your High Resolution Native Population Match Results



dnatribes.com - Customer support email: support@dnatribes.com
"Like" us at <http://Facebook.com/DNatribes>

8/10/2013 - Page 8 of 10

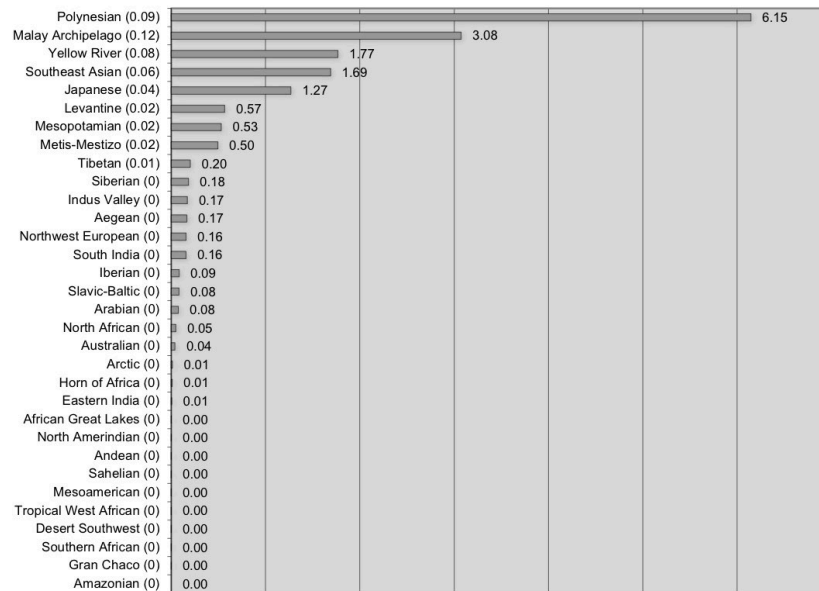
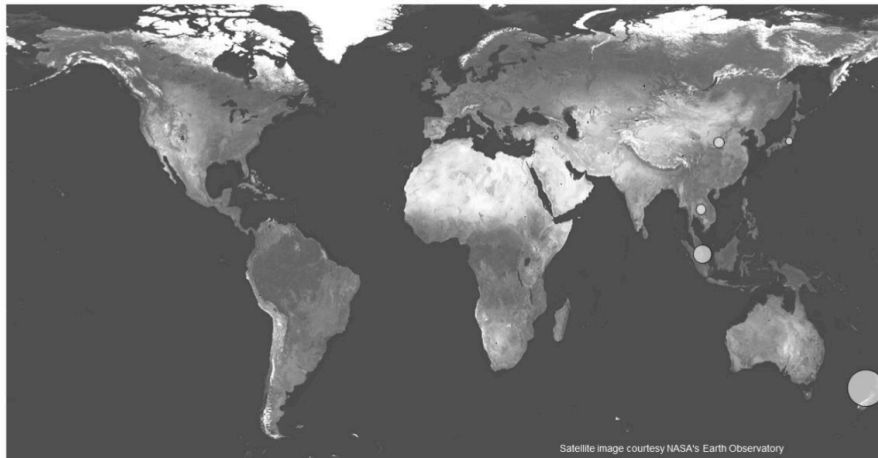


SYMPHOROSE OUAOUAGOUKOUÉ AND THE ORIGIN OF THE ILLINI



All materials copyright © 2006-2013 DNA Tribes. DNA Tribes®.
What's Your Tribe?®. DNA Tribes patented analysis is available exclusively
from DNA Tribes. U.S. PAT. NO. 8,285,486. All rights reserved.

Part D: Your High Resolution World Region Match Results

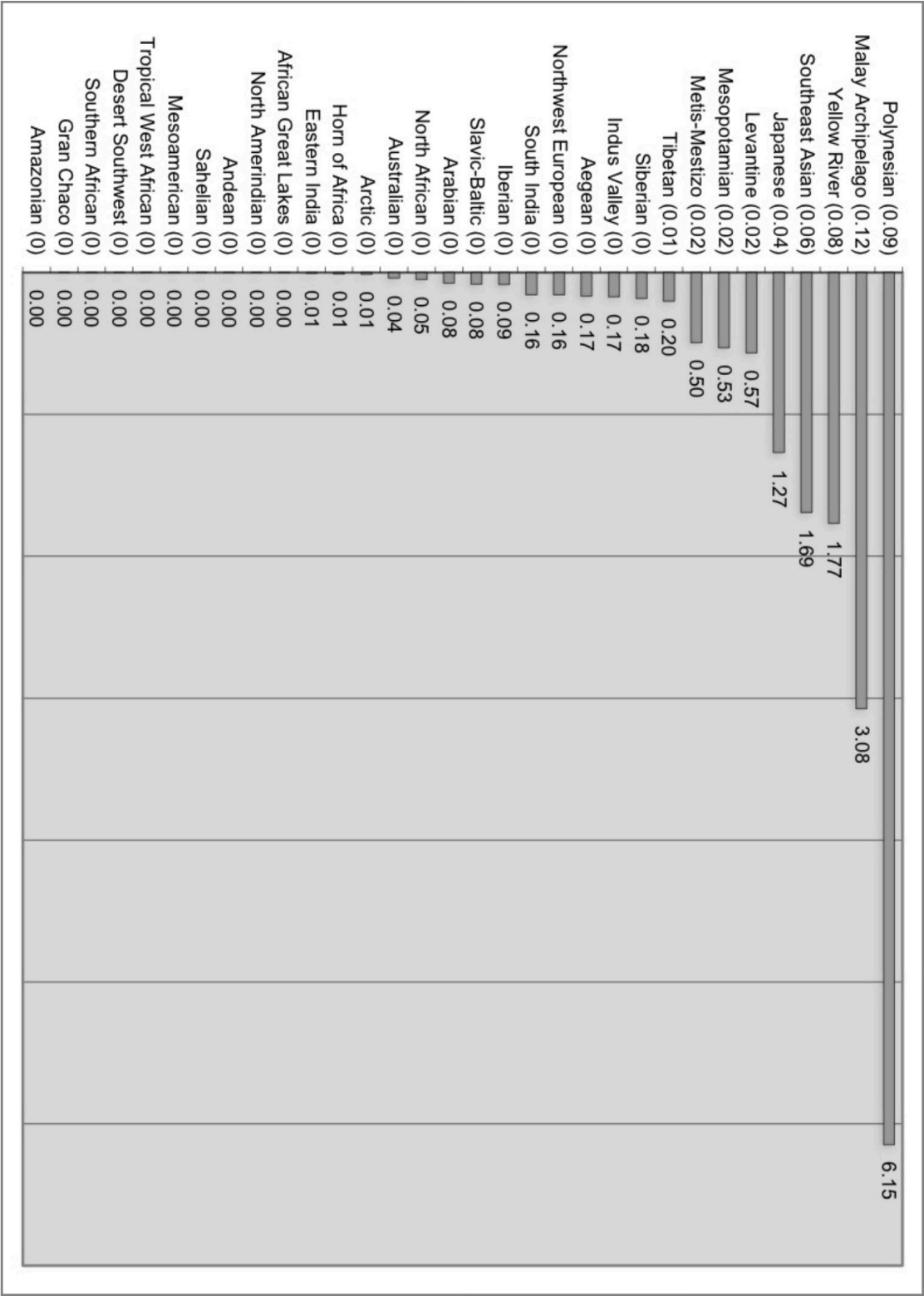


dnatribes.com - Customer support email: support@dnatribes.com

“Like” us at <http://Facebook.com/DNAtribes>

8/10/2013 - Page 10 of 10

SYMPHOROSE OUAOUAGOUKOUÉ AND THE ORIGIN OF THE ILLINI



SYMPHOROSE OUAOUAGOUKOUÉ AND THE ORIGIN OF THE ILLINI



All materials copyright © 2006-2014 DNA Tribes. DNA Tribes®.
What's Your Tribe?®. DNA Tribes patented analysis is available

Part A: Your Genetic Profile

CONFIDENTIAL INFORMATION: Below is your unique genetic profile used to identify your geographical ancestry. Because this profile identifies you personally, DNA Tribes® recommends that you treat the genetic profile on this page as strictly confidential information.

A reference to further information about these genetic markers is listed under Further Reading on Page 6 of this report.

Autosomal STR Profile

9140902 ANNE A. LOHMAN

Locus	Allele 1	Allele 2
D3S1358	17	19
vWA	17	19
D16S539	9	11
CSF1PO	10	11
TPOX	9	11
D8S1179	13	
D21S11	30	32.2
D18S51	15	16
D2S441	14	
D19S433	13	
TH01	7	8
FGA	21	24
D22S1045	11	16
D5S818	10	12
D13S317	9	
D7S820	12	14
SE33	24.2	28.2
D10S1248	13	15
D1S1656	11	14
D12S391	18	19
D2S1338	16	17
LPL	10	
F13B	8	10
F13A01	4	6
Penta D	8	13
Penta C	11	
Penta E	12	15
FES/FPS	10	13
Amelogenin	X	

dnatribes.com - Customer support email: customersupport@dnatribes.com

"Like" us at <http://Facebook.com/DNATribes>

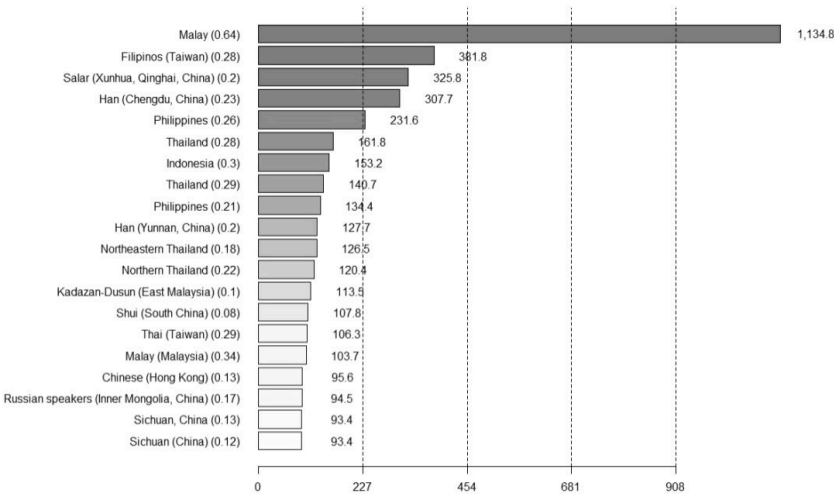
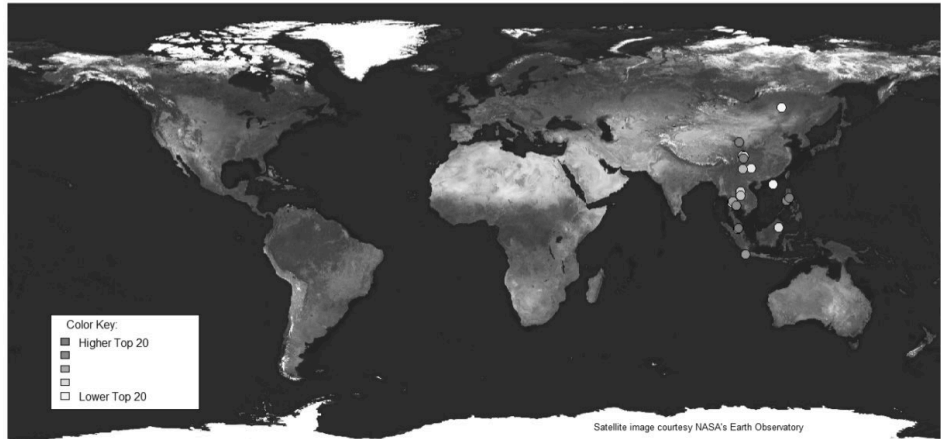
06/28/2016 - Page 7 of 10

SYMPHOROSE OUAOUAGOUKOUÉ AND THE ORIGIN OF THE ILLINI

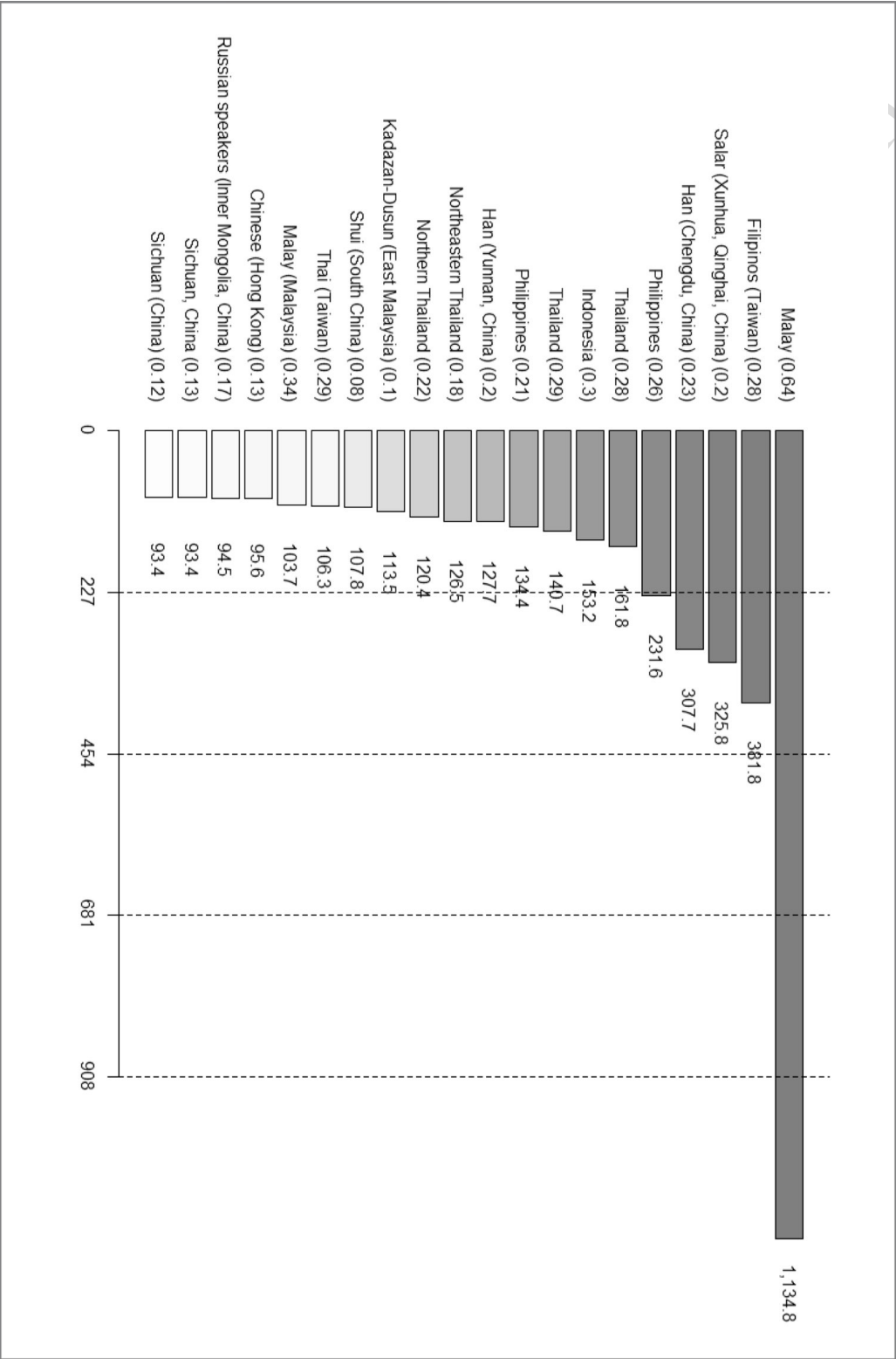


All materials copyright © 2006-2014 DNA Tribes, DNA Tribes®, What's Your Tribe?®, DNA Tribes patented analysis is available

Part B: Your High Resolution Native Population Match Results



dnatribes.com - Customer support email: customersupport@dnatribes.com
"Like" us at <http://Facebook.com/DNatribes>

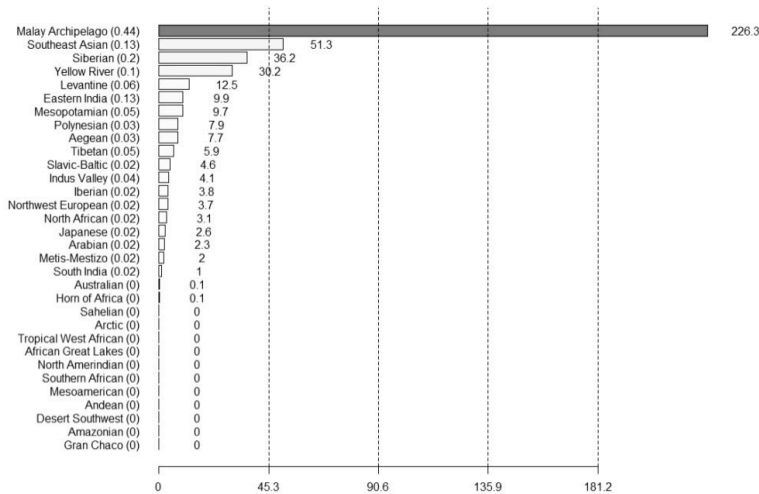
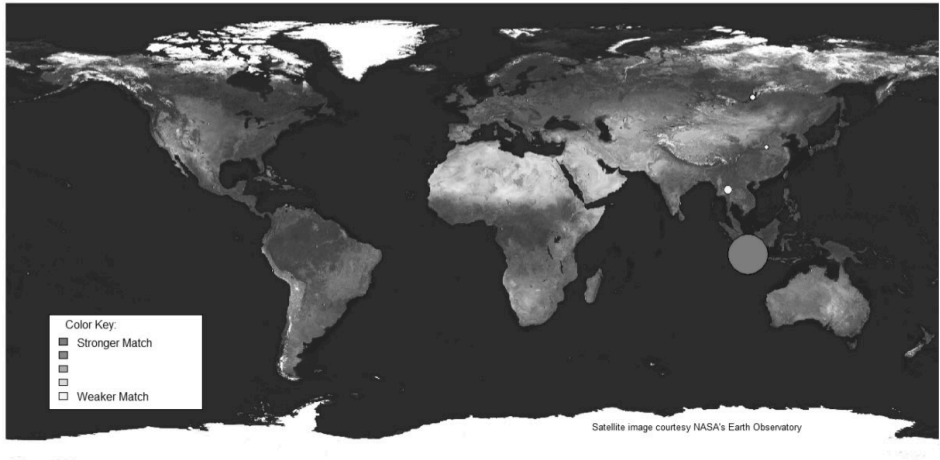


SYMPHOROSE OUAOUAGOUKOUÉ AND THE ORIGIN OF THE ILLINI

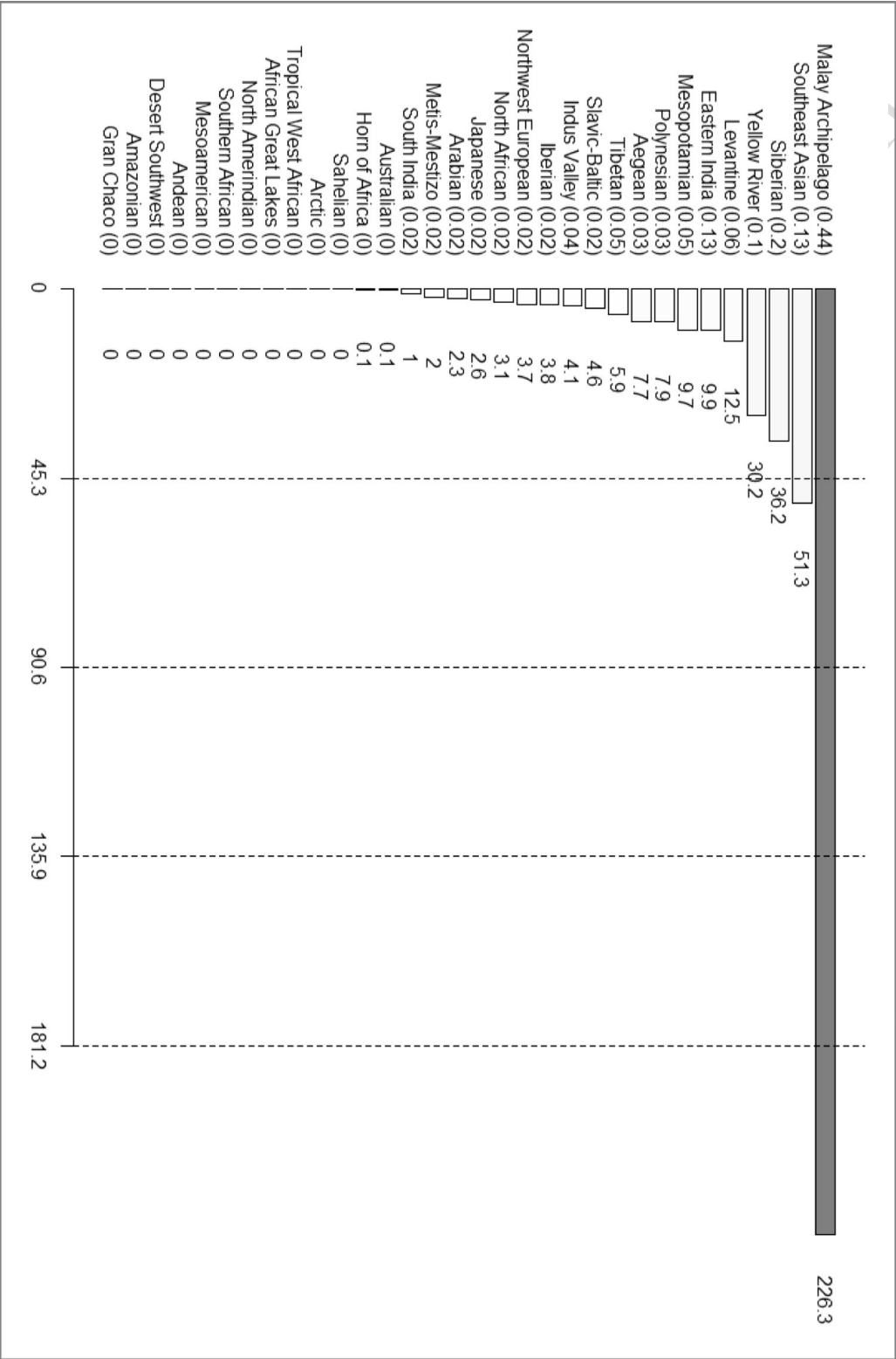


All materials copyright © 2006-2014 DNA Tribes. DNA Tribes®, What's Your Tribe?®, DNA Tribes patented analysis is available

Part D: Your High Resolution World Region Match Results



dnatribes.com - Customer support email: customersupport@dnatribes.com
"Like" us at <http://Facebook.com/DNATribes>



SYMPHOROSE OUAOUAGOUKOUÉ AND THE ORIGIN OF THE ILLINI



www.ehstrafd.org
contact@ehstrafd.org

EHSTRAFD - Most Probable Geographical Origin

Release 2 (Projects:303; Populations: 451; STRs:100)

Date: 22 December 2009

STR Profile											
D2S1338	0	0	FGA	21	24	D7S820	12	14	vWA	17	19
TPOX	9	11	D5S818	10	12	D8S1179	13	13	D13S317	9	9
D3S1358	17	19	CSF1PO	10	11	TH01	7	8	D16S539	9	11
									D18S51	15	16
									D19S433	0	0
									D21S11	30	32_2

Detailed Results						
Map No.	Population	Frequency	Rank	Location	Country	Project
1	Malay	2.59313595577E-022100.00		Malaysia	Malaysia	MY-0001 (2003)
2	Mara	2.51509743221E-02296.99		Mizoram	India	IN-0008 (2002)
3	Han	2.46213801484E-02294.95		Jilin	China	CN-0014 (2004)
4	Chinese	1.54839848824E-02259.71		Malaysia	Malaysia	MY-0001 (2003)
5	East Timor	1.37783670724E-02253.13		East Timor	Timor-Leste	TL-0001 (2003)
6	Indian	1.21834336405E-02246.98		Singapore	Singapore	SG-0003 (2004)
7	Chinese	1.21028700736E-02246.67		Hong Kong	China	CN-0015 (2004)
8	East Timor	9.74229515371E-02337.57		East Timor	Timor-Leste	TL-0002 (2004)
9	Taiwan	8.36766309451E-02332.27		Taiwan	Taiwan	TW-0003 (2003)
10	Venezuelan	7.51900462194E-02329.00		Maracaibo	Venezuela	VE-0003 (2005)
11	Mexican	7.37420532464E-02328.44		Chihuahua	Mexico	MX-0007 (2004)
12	South Korean	7.00112553526E-02327.00		South Korea	Korea, South	KR-0007 (2003)
13	Vietnamese	5.85612435701E-02322.58		United States	United States	AA-0003 (2000)
14	Chinese	5.59370294778E-02321.57		Singapore	Singapore	SG-0002 (2004)
15	Thai	5.44746357075E-02321.01		Thailand	Thailand	TH-0004 (2005)
16	Japanese	5.2999815912E-023 20.44		United States	United States	AA-0003 (2000)
17	Mestizo	4.22252090801E-02316.28		Central Mexico	Mexico	MX-0006 (2004)
18	Japanese	3.9980191803E-023 15.42		United States	United States	AA-0003 (2000)
19	Malay	3.64452164423E-02314.05		Singapore	Singapore	SG-0004 (2004)
20	Chaoshan	3.36430775695E-02312.97		Chaoshan	China	CN-0017 (2003)
21	Caucasian	3.22638868387E-02312.44		Florida	United States	AA-0003 (2000)
22	Japanese	2.90552486651E-02311.20		Japan	Japan	JP-0006 (2002)
23	Caucasian	2.82796350822E-02310.91		California	United States	AA-0003 (2000)
24	Thai	2.79982369678E-02310.80		Thailand	Thailand	TH-0005 (2005)
25	Greek	2.68006617989E-02310.34		Greece	Greece	GR-0003 (2003)
26	Caucasian	2.49083726971E-0239.61		Strathclyde	United Kingdom	GB-0003 (2000)
27	Caucasian	2.34869260668E-0239.06		Virginia	United States	AA-0003 (2000)
28	Japanese	2.33137467029E-0238.99		Central Japan	Japan	JP-0007 (2003)
29	Hmar	2.21943906915E-0238.56		Mizoram	India	IN-0008 (2002)
30	Japanese	2.16596610929E-0238.35		Japan	Japan	JP-0005 (2003)
31	Hispanic	1.98892424553E-0237.67		Michigan	United States	AA-0003 (2000)
32	Caucasian	1.90268173226E-0237.34		Alabama	United States	AA-0003 (2000)

The results of my maternal grandmother's DNA test confirm Professor Campbell's conclusion that the Algonquians are Malay in origin. In fact, I will show below that the ancestors of the Illini were the Illinoans (Ilanuns, Iranuns), or Lanuns,⁵ a seafaring people native to the Philippines as well as to Borneo, now Malaysia.

Now, I realize that the Y-DNA and the mtDNA of some members of the Algonquian tribes, or of the Algonquian-speaking tribes, may appear to paint a different picture of the origin of the Algonquians. I find it necessary, therefore, to inform the reader of something important to remember about Y-DNA and mtDNA, namely, that they can tell us only about the origin and distribution of living lineages. One advantage, therefore, that autosomal DNA has over both Y-DNA and mtDNA, is that it can reveal the genetic input of extinct DNA lineages in an individual, thus rounding out the picture of his or her genetic ancestry. Another thing to keep in mind is, that linguistic affiliation does not always correspond to ethnic affiliation. In fact, I think that in the distant past the Ojibwa, for example, underwent a language shift, went from speaking a non-Algonquian language to an Algonquian one. In other words, I think that the Ojibwa are not of Malay origin (or of Polynesian origin); I think that they are of a completely different origin from that of the Algonquians. But I think the Ojibwa of today have some Algonquian ancestry.

At any rate, I am satisfied that Professor Campbell was correct about the Malay origin of the Algonquian tribes, and of the Malay origin of the Illini in particular, and that the results of my maternal grandmother's DNA test prove that he was right.

⁵ Today the name of the Illinoans, or Lanuns, is regularly spelled Ilanun and Iranun.

SYMPHOROSE OUAOUAGOUKOUÉ AND THE ORIGIN OF THE ILLINI



An Illinoan (Lanun) (left) of Borneo

The Illinoan pirate in the above image is pictured with a Saghai Dyak. The Dyaks, or Dayaks, are natives of Borneo, and they are divided into seven different branches, which are sometimes termed ethnic groups. If one is a 'Sea Dayak,' for instance, then he is an Iban. My grandmother's fourth strongest Native Population Match in her DNA test results from 10 August 2013, out of 1273 populations (such was the number of populations in the database at the time of her test in 2013) from around the world, is Iban (Sarawak Malayasia), on the island of Borneo.

The above image of the Illinoan pirate and the Saghai Dyak is thus described by J. G. Wood in *The Uncivilized Races, or Natural History of Man*:

The left-hand figure represents an Illinoan [Lanun] pirate. These men are found at Tampassook, or Tampasuk as the name is sometimes spelt, a place on the north-western [north-eastern] coast of Borneo, not very much above the island of Labuan. The Illinoans possess many large and formidable war-boats, which are armed in the bows with a very long gun, and have, after the fashion of Bornean boats, an upper deck, which serves as a platform for the combatants and a shelter from the rowers, who sit beneath. There is a small cabin astern for the captain, about the size of a dog-kennel, but the boats have no other sleeping accommodation.⁶

Where the Tampasuk River flows in northeastern Borneo, or present-day Malayasia, is the Tampasuk region, where the Illinoans, or Lanuns, were most concentrated, as Spenser St. John tells us in *Life in the Forests of the Far East*:

⁶ J. G. Wood, *The Uncivilized Races, or Natural History of Man* (American Publishing Company, 1870), p. 456.

The Lanuns [Illinoans] were formerly numerous, having populous settlements on the Tawaran and the Tampasuk, as well as on the Pandasan and Layer Layer farther west. They originally came from the large island of Magindanau [Mindanao], which is considered as the most southern island of the Philippine group. They have formed settlements on various points as convenient piratical stations, particularly on the east coast at Tungku and other places.

As I have elsewhere observed, not only did they pirate by sea, but they created an unappeasable feud with the Ida'an, by stealing their children. No race in the Archipelago equals the Lanun in courage ; the Ida'an therefore considering it useless to make regular attacks, hung about the villages, and by destroying small parties, forced the Lanuns to leave Tawaran, who then joined their countrymen at Tampasuk. Sir Thomas Cochrane attacked both Pandasan and Tampasuk, which induced the most piratical portion to retire to the east coast. At present but few remain in Tampasuk; they are not considered to have more than 150 fighting men; they are essentially strangers, and unpopular.⁷

Sir Thomas Stamford Raffles, in *Memoir of the Life and Public Services of Sir Thomas Stamford Raffles*, writes:

The name of Lanuns, accordingly, which was originally the appellation of those piratical adventurers from the Bay of Lano, in the great island of Mindanari [Mindanao], who formerly infested the coast of Borneo, has been extended to almost all the sea-rovers of the east, particularly to those which infest the straits of Banca and Sunda. The Lanuns, therefore, at present may be considered as an assemblage of the most daring and desperate adventurers from all the tribes of the east, and their principal haunts are the low eastern coast of Sumatra between Palembang and the Lampung country, the eastern part of the island of Banca, the

⁷ Spenser St. John, *Life in the Forests of the Far East* (Smith, Elder and Company, 1862), p. 370.

island of Biliton, the eastern coast of Borneo, but especially Sambas on the N.W. of Borneo.⁸

And J. Hunt, in *Some Particulars Relative to Sulo in the Archipelago of Felicia*, tells us:

The other race frequenting and inhabiting the Sulo islands, are called Lanuns, or a race of men living solely by piracy from the provinces of Illinois and Lanow [Lanao], situated on Magindanao [Mindanao] to the northward of Bongo Bay; their roving depredations are directed in large fleets of small prows in the straits of Macasser, among the Moluccas, but more particularly in the southern parts of the Philippines ; the whole produce is sold at Sulo, which is the grand entrepot.⁹

Thus the Lanuns, or Illinoans, of the Tampasuk area of Borneo were from the former province of Illinois on Mindanao, the southernmost large island of the Philippines, although in even earlier times they may have been natives of Borneo that colonized Mindanao. In any case, the world apparently forgot that there was once a province named Illinois (and spelled as such) in the Philippines. And just as the name of the province of Illinois on Mindanao got its name from the Lanuns, or Illinoans, who lived there, so the State of Illinois got its name from the Illini, who are the descendants of the Lanuns, or Illinoans, of the Philippines and Borneo.

It is a long way from the Philippines and Borneo to the State of Illinois in North America, yet the seafaring ancestors of the

⁸ Sir Thomas Stamford Raffles, *Memoir of the Life and Public Services of Sir Thomas Stamford Raffles* (J. Murray, 1830), p. 45.

⁹ J. Hunt. "Some Particulars Relative to Sulo in the Archipelago of Felicia." *Malayan Miscellanies*. No. X. Pages 1-108 (Sumatran Mission Press, 1820), p. 73.

Illini—the ancestors of Symphorose—made it all the way; and they made it by boat—an epic journey, or a series of epic journeys to be sure.

It is, by the way, difficult to imagine that such people, long accustomed to heat and to wearing a scanty amount of clothing, and not at all accustomed to cold weather, would have, or could have, made a journey from the Philippines or Borneo to North America by following a northern route around the rim of the Pacific. Had they taken such a route, they would have encountered weather far too cold for the kind of clothing that they wore, and conditions for which they had not the resources or experience to prepare themselves. I surmise they island-hopped across the Pacific in warmer latitudes from the Philippines or Borneo to the Americas. Since they were a seafaring people, they were accustomed to life on boats, or in canoes, and as long as they did not stray from the warmer latitudes, they would have been able to live indefinitely on the water. Moreover, after leaving Borneo or the Philippines in deepest antiquity, perhaps tens of thousands of years ago, the Malays that became the Algonquian tribes may have been settled on an island in the Pacific that they had colonized before the sea rose at the end of the last Ice Age, an island as close to North America as, say, Hawaii, one that they had reached by hopping to it from other islands now gone as it is gone, one swallowed by the rising sea, a fate forcing the Malays to find a new home. I think that that is exactly what happened.

In sum, then, Symphorose Ouaouagoukoué was a Native American of the Illini tribe, who were of Malay origin, and who were, and are, descended from the Lanuns, or Illinoans, a people originally from the Philippines and Borneo. As for Marie

Miteouamigoukoué and Marie Mi'kmaq, they were likewise, in all probability, of Malay origin.

Campbell continues:

The Chippewas hang together with the whole Algonquin family. Physical appearance then and character tell the same story as grammatical constructions. Of the dress and implements of the Algonquin I need not speak, because these he has borrowed from other tribes in order to adapt himself to the wants of a new country. But, in contrast to all the eastern tribes, he is essentially a man of the water, having changed maritime habits for the fluviate and the lacustrine. His story of the creation of the world is of an island drawn up out of the water, in connection with which, as Mr. Tylor has shown, Manitou is the counterpart of the Polynesian Maui. His heaven, as the Abbe Maurault says in his "Histoire des Abenakis," was no continent of happy hunting grounds, but "une île du grand lac (l'Océan Atlantique)." The Pacific Ocean and not the Atlantic must have been the original great lake. Like the Malay-Polynesians, the Algonquins did not worship the heavenly bodies; and, like them, they never practised the art of pottery. Their tradition of the creation of mankind out of trees and reeds is the same as that of the Islanders of the Indian Ocean and the Pacific. They were originally idolaters and had idols of carved wood. They agreed with some Polynesian peoples in identifying the soul with the shadow, and Mr. Tylor draws attention to "the conception of the spirit voice as being a low murmur, chirp or whistle, as it were the ghost of a voice," a conception common to the Polynesians and the Algonquins. The extraordinary stretching of the ears that prevailed among the Shawnees is a Polynesian and Malay practice, and appears in Sumatra and in Easter Island. Their very copper colour is that of the people of the Philippines and Friendly Islands, the Ladrões and the Carolines. Sir John Lubbock finds the tree worship of Crees and Abenakis among the people of the Philippines, of Sumatra and of Fiji. The veneration

of many Algonquin tribes for the turtle is an indication of a Polynesian origin, for in the Tonga Islands and elsewhere the turtle plays an important part in mythology. It is also worthy of note that decapitation, not scalping, is the Malay-Polynesian's method of securing a trophy, and that, according to Dr. Gilpin of Halifax, the Micmacs, who had little opportunity of studying the Iroquois' arts of warfare, by similar procedure attested their Malay ancestry.¹⁰

What island is Turtle Island of Algonquian lore? Is it Mindanao? Is it Borneo? We can of course only speculate about its identification, but we can be reasonably sure that Turtle Island is, or was, in the Pacific. At any rate, we know now that the Algonquians are of Malay origin, and that the Illini of North America were the Lanuns, or Illinoans, of the Philippines and Borneo.

¹⁰John Campbell, "Origin of the Aborigines of Canada," pp. 83-84.

In the following pages are records that document my maternal grandmother Anne Raymond's descent from Symphorose Ouaouagoukoué, my mother's descent from Symphorose, as well as my descent from her. My legal name, at birth, and until I decided to change it to Joseph Amyot Padjan (the original spelling of each surname borne by my ancestors), was Joseph Robert Pagen III. My father is Joseph Robert Pagen II (he later changed his middle name to Berlin), and my mother is Susan Marie Amiot. Here is a copy of my birth certificate, to show proof of my parentage:

SYMPHOROSE OUAOUAGOUKOUÉ AND THE ORIGIN OF THE ILLINI

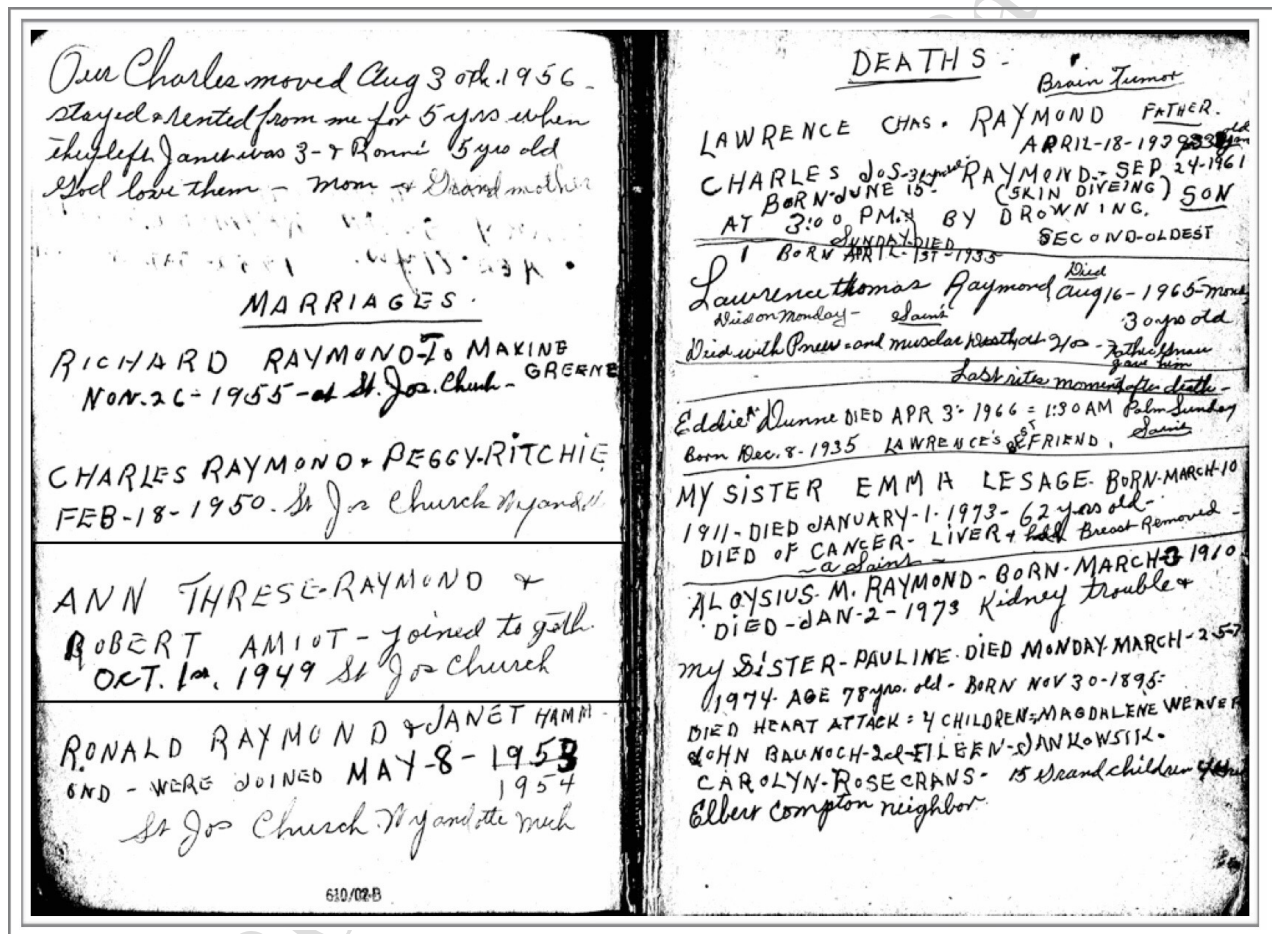
LOCAL FILE NUMBER		438		MICHIGAN DEPARTMENT OF PUBLIC HEALTH		CERTIFICATE OF LIVE BIRTH 121-		BIRTH NUMBER	
CHILD-NAME		FIRST	MIDDLE	LAST	DATE OF BIRTH (MONTH, DAY, YEAR)		HOUR		
1 Joseph Robert		Pagen III		26					
SEX		THIS BIRTH - SINGLE, TWIN, TRIPLE, ETC. (SPECIFY)		IF NOT SINGLE BIRTH - BORN FIRST, SECOND, THIRD, ETC. (SPECIFY)		COUNTY OF BIRTH			
3 Male		40 Single		45		50 Wayne			
CITY, VILLAGE OR TOWNSHIP OF BIRTH		INSIDE CITY LIMITS (SPECIFY YES OR NO)		HOSPITAL - NAME		IF NOT IN HOSPITAL, GIVE STREET AND NUMBER			
55 Dearborn		58 Yes		60					
MOTHER-MAIDEN NAME		FIRST	MIDDLE	LAST	AGE (AT TIME OF THIS BIRTH)		STATE OF BIRTH (IF NOT IN U.S.A., NAME COUNTRY)		
65 Susan Marie Amiot		68 19		68 Michigan					
RESIDENCE-STATE		COUNTY	CITY, VILLAGE OR TOWNSHIP		INSIDE CITY LIMITS (SPECIFY YES OR NO)		STREET AND NUMBER		
75 Michigan		78 Wayne	78 Dearborn		78 Yes				
FATHER-NAME		FIRST	MIDDLE	LAST	AGE (AT TIME OF THIS BIRTH)		STATE OF BIRTH (IF NOT IN U.S.A., NAME COUNTRY)		
85 Joseph Robert Pagen II		88 19		88 Iowa					
INFORMANT		NAME		RELATION TO CHILD					
95 Susan Pagen		98 Mother							
I CERTIFY THAT THE ABOVE NAMED CHILD WAS BORN ALIVE AT THE PLACE AND TIME AND ON THE DATE STATED ABOVE.		DATE SIGNED		ATTENDANT - M.D., D.O., MIDWIFE, OTHER (SPECIFY)					
100 SIGNATURE		105 M.D., D.O., MIDWIFE, OTHER (SPECIFY)		108					
100 CERTIFIER - NAME		(TYPE OR PRINT)		MAILING ADDRESS		STREET OR R.F.D. NO. CITY OR TOWN, STATE, ZIP			
100 Dr. J. Jewell				108					
REGISTRAR - SIGNATURE		DATE RECEIVED BY LOCAL REGISTRAR							
110		115							
CONFIDENTIAL INFORMATION FOR MEDICAL AND HEALTH USE ONLY									
RACE - FATHER		EDUCATION - SPECIFY HIGHEST GRADE COMPLETED		PREVIOUS DELIVERIES - HOW MANY OTHER CHILDREN					
12 WHITE, NEGRO, AMERICAN INDIAN, ETC. (SPECIFY)		13		14					
12		13		14					
RACE - MOTHER		EDUCATION - SPECIFY HIGHEST GRADE COMPLETED		DATE OF LAST LIVE BIRTH		DATE OF LAST FETAL DEATH			
15 WHITE, NEGRO, AMERICAN INDIAN, ETC. (SPECIFY)		16		17		18			
15		16		17		18			
DATE LAST NORMAL MENSTRUATION BEGAN		MONTH OF PREGNANCY PRENATAL CARE BEGAN FIRST, SECOND, THIRD, ETC. (SPECIFY)		PRENATAL VISITS TOTAL NUMBER (IF NONE, SO STATE)		LEGITIMATE (SPECIFY YES OR NO)		BIRTH WEIGHT	
19		19		20		21		22	
19		19		20		21		22	
COMPLICATIONS RELATED TO PREGNANCY		(DESCRIBE OR WRITE "NONE")		BIRTH TRAUMA TO CHILD		(DESCRIBE OR WRITE "NONE")			
23		23		24		25			
23		23		24		25			
COMPLICATIONS NOT RELATED TO PREGNANCY		(DESCRIBE OR WRITE "NONE")		CONGENITAL MALFORMATIONS OR ABNORMALITIES OF CHILD		(DESCRIBE OR WRITE "NONE")			
26		26		27		28			
26		26		27		28			
COMPLICATIONS OF LABOR		(DESCRIBE OR WRITE "NONE")		IF THIS CHILD BEING REPORTED WITH ONE PERCENT SOLUTION OF SILVER NITRATE					
29		29		30		31			
29		29		30		31			
WAS MOTHER'S BLOOD TESTED FOR DYSPHYDRIA DURING PREGNANCY?		DATE OF TEST		# BLOOD NOT TESTED, STATE REASON					
32		32		33		34			
32		32		33		34			
BIRTH RECORD		ENTER STATE FILE NUMBER OF BIRTH CERTIFICATE FOR THIS CHILD		LIVE BIRTHS		FETAL DEATHS			
35		35		36		37			
35		35		36		37			

State of Michigan)
County of Wayne) ss.
City of Dearborn)

I do hereby certify that this document is a true copy of the record on file in this office.

JUL 20 1995

Date _____ Registrar _____

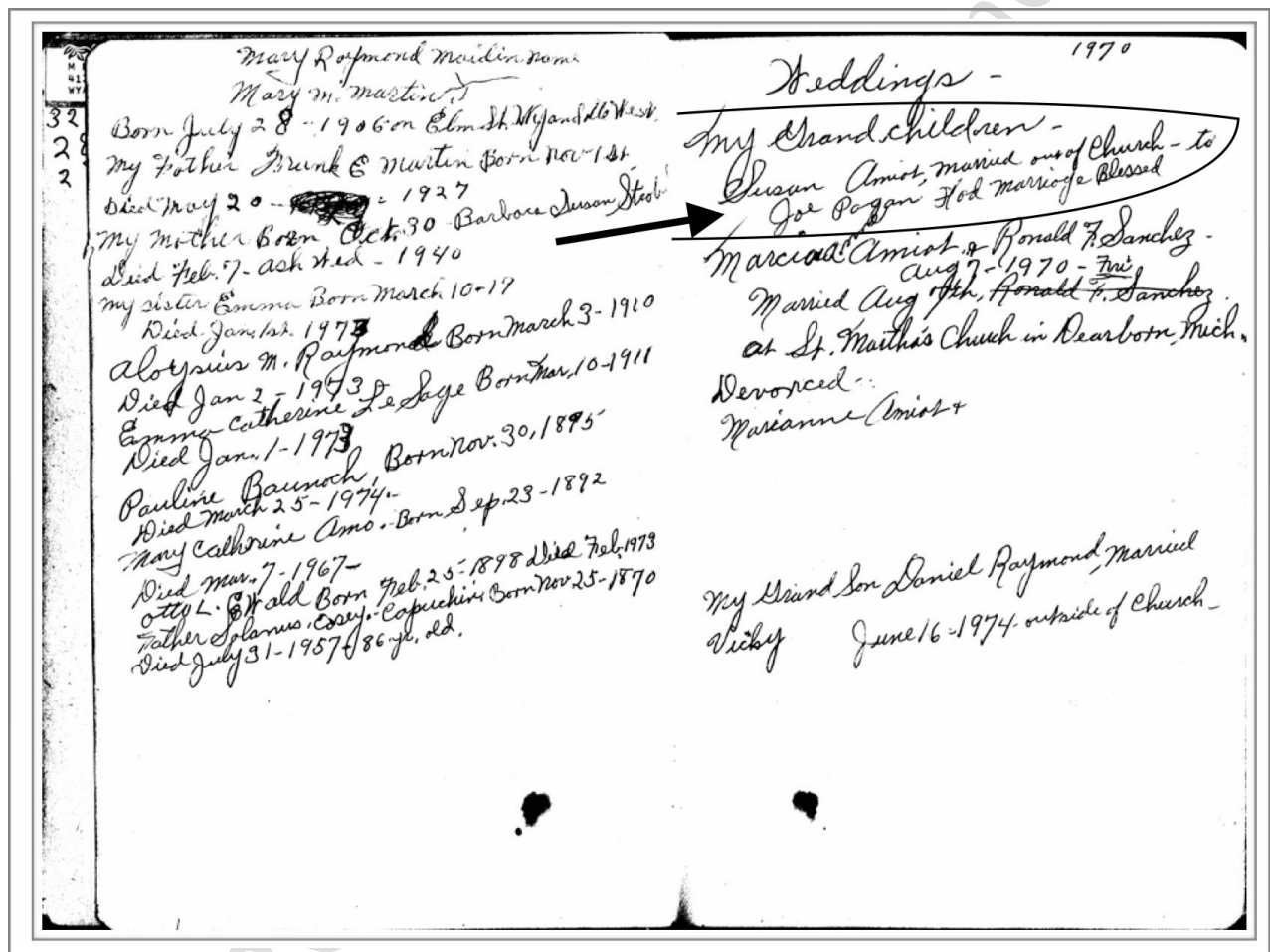


Bible of Mary Raymond (née Martin), mother of Anne Amiot Lohman (née Raymond), who was, again, the mother of Susan Marie Amiot, my mother. This record shows that my grandparents Robert Amiot and Anne (Ann) Therese Raymond married on 1 October 1949.

SYMPHOROSE OUAOUAGOUKOUÉ AND THE ORIGIN OF THE ILLINI

<p>JOSEPH RAYMOND JULY 5-1869 MARY S RAYMOND JUNE-22-1871 DANNY RAYMOND DEC-23-1954 RENE PATRICA-SUN. APR. 15-1956-230PM. RHONDA RAYMOND Feb. 3-1960 Frank C</p> <p>RICHARDS FAMILY - FIRST BORN JOHN DEBORAH MARY-JUNE 25-1962-MIN. BRYAN FRANCIS-NOV. 27-1958. LINDA KATHERINE JAN 3-1961</p>	<p>DEATHS FRANK E. MARTIN- MAY 20-1927 BARBARA S. MARTIN FEB. 7. 1940 LAWRENCE C RAYMOND APR. 18-1939 JOSEPH RAYMOND-AUG-17-1947 MARY. SUSAN RAYMOND-JULY-19-1955 AGE: 81 yw. 1952-SAT. 6:30 AM</p> <p>CHARLES J. - Sep 24-1961-31 yds old. BORN June 15-1930 DROWNED WHILE SKIN DIVING. AT TORCH ON A SUNDAY AFTER NOON</p> <p>LAWRENCE T. THOMAS RAYMOND DIED AUGUST 16th 1965 MONDAY AT 8:30 WITH PNEUMONIA BORN APR-1-1935</p> <p>PAULINE BAUNOCH BORN NOV. 30 1896 DIED MARCH-26-1974 ON A MONDAY - EMMA LESAGE</p>
<p>ANNS FAMILY - MARCIA ANN AMIOT AUG. 13-1950 SUSAN MARIE AUG. 19-1951 GREGORY GERARD- FEB. 19-1953-STILL BORN ROBERT JOSEPH- OCT 13-1954 MARY ANN JULY 4th -56 MICHELE NOV. 25-57 TOMMY MAY 2-1959 JULIE OCT 19-1960</p>	

Bible of Mary Raymond (née Martin). This record shows the name of my mother and the names of all her siblings, Ann(e) being, of course, their mother, wife of Robert Amiot. At the top left is the name Mary S. Raymond and her birth date. Mary S. Raymond was Mary Susan Bondy, who married Joseph Raymond; their daughter-in-law Mary Raymond (née Martin) was the mother of Anne Amiot Lohman (née Raymond).



Bible of Mary Raymond (née Martin). This page records the marriage of my mother and my father.

Source Citation for Michigan, Marriage Records, 1867-1952

Ancestry Record

Citation Details

Associated Facts

Media

Michigan, Marriage Records, 1867-1952

View Record

Name

Ann Therese Raymond

Gender

Female

Race

White

Age

17

Birth Year

abt 1932

Birth Place

Wyandotte, Michigan

License County

Wayne

Marriage Date

1 Oct 1949

Marriage Place

Wyandotte, Wayne, Michigan, USA

Residence Place

Wyandotte, Michigan

Father

Lawrence Charles Raymond

Mother

Mary Magdlene Martin

Spouse

Robert Hubert Amiot

County File Number

768420

State File Number

446032

Household Members

Name	Age
Robert Hubert Amiot	
Cecilia Lucille Fountain	
Hubert Joseph Amiot	
Ann Therese Raymond	
Mary Magdlene Martin	
Lawrence Charles Raymond	

Transcription of the marriage record of Anne Raymond and Robert Hubert Amiot, parents of Susan Marie Amiot, my mother.

SYMPHOROSE OUAOUAGOUKOUÉ AND THE ORIGIN OF THE ILLINI

No. 344770 **Marriage License** 192 8
Wayne County, Michigan 82 37815

To any person legally authorized to solemnize marriage,
Greeting:
Marriage May Be Solemnized Between

Mr. Lawrence Raymond and M. Mary Martin
 affidavit having been filed in this office, as provided by Public Act No. 128, Laws of 1887, as amended, by which it
 appears that said Lawrence Raymond is 22 years of age,
 color is White residence is Wyandotte, Michigan and birthplace was
Michigan occupation is Electrician father's name
Joseph and mother's maiden name was Mary Bondy
 has been previously married No and that said Mary Martin
 is 21 years of age, color is White residence is Wyandotte, Michigan and
 birthplace was Michigan occupation is None father's name
Frank and mother's maiden name was Barbara Strobel
 and who has been previously married No time and whose maiden name was
 and whose Parent's or Guardian's consent, in case she
 has not attained the age of eighteen years, has been filed in my office.

In Witness Whereof, I have hereunto attached my hand and the
 seal of Wayne County, Michigan, this 10th
 day of April, A. D. 192 8.
John F. Larrell
 County Clerk
By J. J. Martin Deputy Clerk

Certificate of Marriage
 Between Mr. Lawrence Raymond and M. Mary Martin
 I hereby certify that, in accordance with the above license, the persons herein mentioned were joined
 in marriage by me at Wyandotte County of Wayne, Michigan,
 on the 21st day of April, A. D. 192 8, in the presence
 of Charles Byrd of Wyandotte
 and Anna Weiner of Wyandotte
 as witnesses.
Rev. J. J. Martin
 Name of Minister or Clergyman.
John F. Larrell
 Official Seal.

This copy to be retained by the County Clerk until the original is returned; when it is to be completed by endorse-
 ment and forwarded at the first of the following month to the Michigan Department of Health.

Marriage record of Lawrence Charles Raymond and Mary Magdalene Martin, parents of Anne Raymond. This record shows that Lawrence was the son of Joseph Raymond and Mary Bondy.

SYMPHOROSE OUAOUAGOUKOUÉ AND THE ORIGIN OF THE ILLINI

527

To the Honorable Secretary of State of Michigan:

Return of Marriages in the County of

Wayne 1861

Record Number	Date of License	Full Name of Husband and Full Name of Wife	Age of Husband	Place of Birth of Husband	Residence of Wife	Residence of Husband	Occupation of Husband	Date of Marriage
12586	Nov 10 1861	Charles C. Smith 20 Alice M. Pigg 20	20	France	Michigan	New York	Farmer	Nov 14
12587	Nov 10 1861	John C. Smith 20 Elizabeth M. Smith 20	20	France	Michigan	New York	Farmer	Nov 14
12588	Nov 10 1861	John C. Smith 20 Alice M. Pigg 20	20	France	Michigan	New York	Farmer	Nov 14
12589	Nov 10 1861	John C. Smith 20 Alice M. Pigg 20	20	France	Michigan	New York	Farmer	Nov 14
12590	Nov 10 1861	John C. Smith 20 Alice M. Pigg 20	20	France	Michigan	New York	Farmer	Nov 14
12591	Nov 10 1861	John C. Smith 20 Alice M. Pigg 20	20	France	Michigan	New York	Farmer	Nov 14
12592	Nov 10 1861	John C. Smith 20 Alice M. Pigg 20	20	France	Michigan	New York	Farmer	Nov 14
12593	Nov 10 1861	John C. Smith 20 Alice M. Pigg 20	20	France	Michigan	New York	Farmer	Nov 14
12594	Nov 10 1861	John C. Smith 20 Alice M. Pigg 20	20	France	Michigan	New York	Farmer	Nov 14
12595	Nov 10 1861	John C. Smith 20 Alice M. Pigg 20	20	France	Michigan	New York	Farmer	Nov 14
12596	Nov 10 1861	John C. Smith 20 Alice M. Pigg 20	20	France	Michigan	New York	Farmer	Nov 14
12597	Nov 10 1861	John C. Smith 20 Alice M. Pigg 20	20	France	Michigan	New York	Farmer	Nov 14
12598	Nov 10 1861	John C. Smith 20 Alice M. Pigg 20	20	France	Michigan	New York	Farmer	Nov 14
12599	Nov 10 1861	John C. Smith 20 Alice M. Pigg 20	20	France	Michigan	New York	Farmer	Nov 14
12600	Nov 10 1861	John C. Smith 20 Alice M. Pigg 20	20	France	Michigan	New York	Farmer	Nov 14
12601	Nov 10 1861	John C. Smith 20 Alice M. Pigg 20	20	France	Michigan	New York	Farmer	Nov 14
12602	Nov 10 1861	John C. Smith 20 Alice M. Pigg 20	20	France	Michigan	New York	Farmer	Nov 14
12603	Nov 10 1861	John C. Smith 20 Alice M. Pigg 20	20	France	Michigan	New York	Farmer	Nov 14
12604	Nov 10 1861	John C. Smith 20 Alice M. Pigg 20	20	France	Michigan	New York	Farmer	Nov 14
12605	Nov 10 1861	John C. Smith 20 Alice M. Pigg 20	20	France	Michigan	New York	Farmer	Nov 14
12606	Nov 10 1861	John C. Smith 20 Alice M. Pigg 20	20	France	Michigan	New York	Farmer	Nov 14
12607	Nov 10 1861	John C. Smith 20 Alice M. Pigg 20	20	France	Michigan	New York	Farmer	Nov 14
12608	Nov 10 1861	John C. Smith 20 Alice M. Pigg 20	20	France	Michigan	New York	Farmer	Nov 14
12609	Nov 10 1861	John C. Smith 20 Alice M. Pigg 20	20	France	Michigan	New York	Farmer	Nov 14
12610	Nov 10 1861	John C. Smith 20 Alice M. Pigg 20	20	France	Michigan	New York	Farmer	Nov 14

41.5-25 Jan 2-5-2

I hereby certify that the above Return of Marriages is a correct

527

for the Quarter Ending April 1st

A. D. 1862.

Record Number	Date of License	Full Name of Husband and Full Name of Wife	Age of Husband	Place of Birth of Husband	Residence of Wife	Residence of Husband	Occupation of Husband	Date of Marriage
12586	Nov 10 1861	Charles C. Smith 20 Alice M. Pigg 20	20	France	Michigan	New York	Farmer	Nov 14
12587	Nov 10 1861	John C. Smith 20 Elizabeth M. Smith 20	20	France	Michigan	New York	Farmer	Nov 14
12588	Nov 10 1861	John C. Smith 20 Alice M. Pigg 20	20	France	Michigan	New York	Farmer	Nov 14
12589	Nov 10 1861	John C. Smith 20 Alice M. Pigg 20	20	France	Michigan	New York	Farmer	Nov 14
12590	Nov 10 1861	John C. Smith 20 Alice M. Pigg 20	20	France	Michigan	New York	Farmer	Nov 14
12591	Nov 10 1861	John C. Smith 20 Alice M. Pigg 20	20	France	Michigan	New York	Farmer	Nov 14
12592	Nov 10 1861	John C. Smith 20 Alice M. Pigg 20	20	France	Michigan	New York	Farmer	Nov 14
12593	Nov 10 1861	John C. Smith 20 Alice M. Pigg 20	20	France	Michigan	New York	Farmer	Nov 14
12594	Nov 10 1861	John C. Smith 20 Alice M. Pigg 20	20	France	Michigan	New York	Farmer	Nov 14
12595	Nov 10 1861	John C. Smith 20 Alice M. Pigg 20	20	France	Michigan	New York	Farmer	Nov 14
12596	Nov 10 1861	John C. Smith 20 Alice M. Pigg 20	20	France	Michigan	New York	Farmer	Nov 14
12597	Nov 10 1861	John C. Smith 20 Alice M. Pigg 20	20	France	Michigan	New York	Farmer	Nov 14
12598	Nov 10 1861	John C. Smith 20 Alice M. Pigg 20	20	France	Michigan	New York	Farmer	Nov 14
12599	Nov 10 1861	John C. Smith 20 Alice M. Pigg 20	20	France	Michigan	New York	Farmer	Nov 14
12600	Nov 10 1861	John C. Smith 20 Alice M. Pigg 20	20	France	Michigan	New York	Farmer	Nov 14
12601	Nov 10 1861	John C. Smith 20 Alice M. Pigg 20	20	France	Michigan	New York	Farmer	Nov 14
12602	Nov 10 1861	John C. Smith 20 Alice M. Pigg 20	20	France	Michigan	New York	Farmer	Nov 14
12603	Nov 10 1861	John C. Smith 20 Alice M. Pigg 20	20	France	Michigan	New York	Farmer	Nov 14
12604	Nov 10 1861	John C. Smith 20 Alice M. Pigg 20	20	France	Michigan	New York	Farmer	Nov 14
12605	Nov 10 1861	John C. Smith 20 Alice M. Pigg 20	20	France	Michigan	New York	Farmer	Nov 14
12606	Nov 10 1861	John C. Smith 20 Alice M. Pigg 20	20	France	Michigan	New York	Farmer	Nov 14
12607	Nov 10 1861	John C. Smith 20 Alice M. Pigg 20	20	France	Michigan	New York	Farmer	Nov 14
12608	Nov 10 1861	John C. Smith 20 Alice M. Pigg 20	20	France	Michigan	New York	Farmer	Nov 14
12609	Nov 10 1861	John C. Smith 20 Alice M. Pigg 20	20	France	Michigan	New York	Farmer	Nov 14
12610	Nov 10 1861	John C. Smith 20 Alice M. Pigg 20	20	France	Michigan	New York	Farmer	Nov 14

Used for record Oct 7-1873

Transcript from the Records of this Office.

County Clerk.

Marriage record of Joseph Raymond and Mary Bondy (here spelled Bondie). This record shows that the father of Mary Bondy was Thomas Bondy; but it does not show the name of Mary's mother.

SYMPHOROSE OUAOUAGOUKOUÉ AND THE ORIGIN OF THE ILLINI

TO THE HON. SECRETARY OF STATE OF MICHIGAN									
Return of Births in the County of <i>Wayne</i>									
CHILD.									
Serial.	DATE OF BIRTH.	NAME.	SEX.	COLOR.	RESIDENCE.	FULL NAME OF EACH.	RESIDENCE.	DATE OF RECORD.	
3136	Nov. 21 1872	Christine Babine	White	Male	Wyandotte City	Charles Babine	Wyandotte	Oct 24 1873	
3137	May 19 1872	Anna Anna	White	Female	Wyandotte City	George May	Wyandotte	Oct 24 1873	
3138	Oct 2 1872	Henrietta Babine	White	Male	Wyandotte City	John H. Babine	Wyandotte	Oct 24 1873	
3139	Sept 28 1872	James Babine	White	Male	Brownstown	James Babine	Brownstown	Oct 24 1873	
3140	June 22 1872	Mary Bondy	White	Female	Brownstown	Thomas Bondy	Brownstown	Oct 24 1873	
3141	July 12 1872	Frank Bondy	White	Male	Brownstown	Frank Bondy	Brownstown	Oct 24 1873	
3142	April 25 1872	Thomas Bondy	White	Male	Brownstown	Thomas Bondy	Brownstown	Oct 24 1873	
3143	Nov 18 1872	Robert Bondy	White	Male	Brownstown	Robert Bondy	Brownstown	Oct 24 1873	
3144	Oct 21 1872	Thomas Bondy	White	Male	Brownstown	Thomas Bondy	Brownstown	Oct 24 1873	
3145	Nov 19 1872	Mary Bondy	White	Female	Brownstown	Mary Bondy	Brownstown	Oct 24 1873	
3146	Dec 8 1872	Mary Bondy	White	Female	Brownstown	Mary Bondy	Brownstown	Oct 24 1873	
3147	Nov 3 1872	Grant Bondy	White	Male	Brownstown	Grant Bondy	Brownstown	Oct 24 1873	
3148	April 31 1872	Mary Bondy	White	Female	Brownstown	Mary Bondy	Brownstown	Oct 24 1873	
3149	Nov 10 1872	Albert Bondy	White	Male	Brownstown	Albert Bondy	Brownstown	Oct 24 1873	
3150	Nov 10 1872	William Bondy	White	Male	Brownstown	William Bondy	Brownstown	Oct 24 1873	

Birth record of Mary Bondy, wife of Joseph Raymond. This record shows that Thomas Bondy was the father of Mary; and it shows that the name of the mother of Mary was Samantha. The name of the mother of Mary Bondy, however, was actually Matilda Samantha Bondy (née Bondy). Note also that the birth date of Mary Bondy is 22 June 1872 in this record, and that it is 22 June 1871 in the Bible record above.

SYMPHOROSE OUAOUAGOUKOUÉ AND THE ORIGIN OF THE ILLINI

B.

Page No. 46
 Supervisor's Dist. No. 1
 Enumeration Dist. No. 247

Note A.—The Census Year begins June 1, 1879, and ends May 31, 1880.
 Note B.—All persons will be included in the Enumeration who were living on the 1st day of June, 1880. No others will. Children BORN SINCE June 1, 1880, will be OMITTED. Members of Families who have DIED SINCE June 1, 1880, will be INCLUDED.
 Note C.—Questions Nos. 13, 14, 22 and 23 are not to be asked in respect to persons under 10 years of age.

SCHEDULE 1.—Inhabitants in Briontown, in the County of Wayne, State of Michigan, enumerated by me on the 21st day of June, 1880.

John C. L. [Signature]

No.	Name	Age	Sex	Color	Marital Status	Profession, Occupation or Trade	Place of Birth	Place of Birth of Father	Place of Birth of Mother
1	Joseph Bondy	45	M	W	Married	Farmer	Michigan	Michigan	Michigan
2	Matilda Bondy	40	F	W	Married	Farmer	Michigan	Michigan	Michigan
3	Thomas Bondy	15	M	W	Single	Farmer	Michigan	Michigan	Michigan
4	Philip Bondy	12	M	W	Single	Farmer	Michigan	Michigan	Michigan
5	Mary Bondy	10	F	W	Single	Farmer	Michigan	Michigan	Michigan
6	John Bondy	8	M	W	Single	Farmer	Michigan	Michigan	Michigan
7	Sarah Bondy	6	F	W	Single	Farmer	Michigan	Michigan	Michigan
8	William Bondy	4	M	W	Single	Farmer	Michigan	Michigan	Michigan
9	Elizabeth Bondy	3	F	W	Single	Farmer	Michigan	Michigan	Michigan
10	James Bondy	2	M	W	Single	Farmer	Michigan	Michigan	Michigan
11	Anna Bondy	1	F	W	Single	Farmer	Michigan	Michigan	Michigan
12	John Bondy	1	M	W	Single	Farmer	Michigan	Michigan	Michigan
13	Mary Bondy	1	F	W	Single	Farmer	Michigan	Michigan	Michigan
14	Thomas Bondy	1	M	W	Single	Farmer	Michigan	Michigan	Michigan
15	Philip Bondy	1	M	W	Single	Farmer	Michigan	Michigan	Michigan
16	Mary Bondy	1	F	W	Single	Farmer	Michigan	Michigan	Michigan
17	John Bondy	1	M	W	Single	Farmer	Michigan	Michigan	Michigan
18	Sarah Bondy	1	F	W	Single	Farmer	Michigan	Michigan	Michigan
19	William Bondy	1	M	W	Single	Farmer	Michigan	Michigan	Michigan
20	Elizabeth Bondy	1	F	W	Single	Farmer	Michigan	Michigan	Michigan
21	James Bondy	1	M	W	Single	Farmer	Michigan	Michigan	Michigan
22	Anna Bondy	1	F	W	Single	Farmer	Michigan	Michigan	Michigan
23	John Bondy	1	M	W	Single	Farmer	Michigan	Michigan	Michigan
24	Mary Bondy	1	F	W	Single	Farmer	Michigan	Michigan	Michigan
25	Thomas Bondy	1	M	W	Single	Farmer	Michigan	Michigan	Michigan
26	Philip Bondy	1	M	W	Single	Farmer	Michigan	Michigan	Michigan
27	Mary Bondy	1	F	W	Single	Farmer	Michigan	Michigan	Michigan
28	John Bondy	1	M	W	Single	Farmer	Michigan	Michigan	Michigan
29	Sarah Bondy	1	F	W	Single	Farmer	Michigan	Michigan	Michigan
30	William Bondy	1	M	W	Single	Farmer	Michigan	Michigan	Michigan
31	Elizabeth Bondy	1	F	W	Single	Farmer	Michigan	Michigan	Michigan
32	James Bondy	1	M	W	Single	Farmer	Michigan	Michigan	Michigan
33	Anna Bondy	1	F	W	Single	Farmer	Michigan	Michigan	Michigan
34	John Bondy	1	M	W	Single	Farmer	Michigan	Michigan	Michigan
35	Mary Bondy	1	F	W	Single	Farmer	Michigan	Michigan	Michigan
36	Thomas Bondy	1	M	W	Single	Farmer	Michigan	Michigan	Michigan
37	Philip Bondy	1	M	W	Single	Farmer	Michigan	Michigan	Michigan
38	Mary Bondy	1	F	W	Single	Farmer	Michigan	Michigan	Michigan
39	John Bondy	1	M	W	Single	Farmer	Michigan	Michigan	Michigan
40	Sarah Bondy	1	F	W	Single	Farmer	Michigan	Michigan	Michigan
41	William Bondy	1	M	W	Single	Farmer	Michigan	Michigan	Michigan
42	Elizabeth Bondy	1	F	W	Single	Farmer	Michigan	Michigan	Michigan
43	James Bondy	1	M	W	Single	Farmer	Michigan	Michigan	Michigan
44	Anna Bondy	1	F	W	Single	Farmer	Michigan	Michigan	Michigan
45	John Bondy	1	M	W	Single	Farmer	Michigan	Michigan	Michigan
46	Mary Bondy	1	F	W	Single	Farmer	Michigan	Michigan	Michigan
47	Thomas Bondy	1	M	W	Single	Farmer	Michigan	Michigan	Michigan
48	Philip Bondy	1	M	W	Single	Farmer	Michigan	Michigan	Michigan
49	Mary Bondy	1	F	W	Single	Farmer	Michigan	Michigan	Michigan
50	John Bondy	1	M	W	Single	Farmer	Michigan	Michigan	Michigan

Note D.—In making entries in columns 8, 10, 11, 12, 13, 14, 15, 16, 17, 18, 19, 20, 21, 22, 23, 24, 25, 26, 27, 28, 29, 30, 31, 32, 33, 34, 35, 36, 37, 38, 39, 40, 41, 42, 43, 44, 45, 46, 47, 48, 49, 50, 51, 52, 53, 54, 55, 56, 57, 58, 59, 60, 61, 62, 63, 64, 65, 66, 67, 68, 69, 70, 71, 72, 73, 74, 75, 76, 77, 78, 79, 80, 81, 82, 83, 84, 85, 86, 87, 88, 89, 90, 91, 92, 93, 94, 95, 96, 97, 98, 99, 100, 101, 102, 103, 104, 105, 106, 107, 108, 109, 110, 111, 112, 113, 114, 115, 116, 117, 118, 119, 120, 121, 122, 123, 124, 125, 126, 127, 128, 129, 130, 131, 132, 133, 134, 135, 136, 137, 138, 139, 140, 141, 142, 143, 144, 145, 146, 147, 148, 149, 150, 151, 152, 153, 154, 155, 156, 157, 158, 159, 160, 161, 162, 163, 164, 165, 166, 167, 168, 169, 170, 171, 172, 173, 174, 175, 176, 177, 178, 179, 180, 181, 182, 183, 184, 185, 186, 187, 188, 189, 190, 191, 192, 193, 194, 195, 196, 197, 198, 199, 200, 201, 202, 203, 204, 205, 206, 207, 208, 209, 210, 211, 212, 213, 214, 215, 216, 217, 218, 219, 220, 221, 222, 223, 224, 225, 226, 227, 228, 229, 230, 231, 232, 233, 234, 235, 236, 237, 238, 239, 240, 241, 242, 243, 244, 245, 246, 247, 248, 249, 250, 251, 252, 253, 254, 255, 256, 257, 258, 259, 260, 261, 262, 263, 264, 265, 266, 267, 268, 269, 270, 271, 272, 273, 274, 275, 276, 277, 278, 279, 280, 281, 282, 283, 284, 285, 286, 287, 288, 289, 290, 291, 292, 293, 294, 295, 296, 297, 298, 299, 300, 301, 302, 303, 304, 305, 306, 307, 308, 309, 310, 311, 312, 313, 314, 315, 316, 317, 318, 319, 320, 321, 322, 323, 324, 325, 326, 327, 328, 329, 330, 331, 332, 333, 334, 335, 336, 337, 338, 339, 340, 341, 342, 343, 344, 345, 346, 347, 348, 349, 350, 351, 352, 353, 354, 355, 356, 357, 358, 359, 360, 361, 362, 363, 364, 365, 366, 367, 368, 369, 370, 371, 372, 373, 374, 375, 376, 377, 378, 379, 380, 381, 382, 383, 384, 385, 386, 387, 388, 389, 390, 391, 392, 393, 394, 395, 396, 397, 398, 399, 400, 401, 402, 403, 404, 405, 406, 407, 408, 409, 410, 411, 412, 413, 414, 415, 416, 417, 418, 419, 420, 421, 422, 423, 424, 425, 426, 427, 428, 429, 430, 431, 432, 433, 434, 435, 436, 437, 438, 439, 440, 441, 442, 443, 444, 445, 446, 447, 448, 449, 450, 451, 452, 453, 454, 455, 456, 457, 458, 459, 460, 461, 462, 463, 464, 465, 466, 467, 468, 469, 470, 471, 472, 473, 474, 475, 476, 477, 478, 479, 480, 481, 482, 483, 484, 485, 486, 487, 488, 489, 490, 491, 492, 493, 494, 495, 496, 497, 498, 499, 500, 501, 502, 503, 504, 505, 506, 507, 508, 509, 510, 511, 512, 513, 514, 515, 516, 517, 518, 519, 520, 521, 522, 523, 524, 525, 526, 527, 528, 529, 530, 531, 532, 533, 534, 535, 536, 537, 538, 539, 540, 541, 542, 543, 544, 545, 546, 547, 548, 549, 550, 551, 552, 553, 554, 555, 556, 557, 558, 559, 560, 561, 562, 563, 564, 565, 566, 567, 568, 569, 570, 571, 572, 573, 574, 575, 576, 577, 578, 579, 580, 581, 582, 583, 584, 585, 586, 587, 588, 589, 590, 591, 592, 593, 594, 595, 596, 597, 598, 599, 600, 601, 602, 603, 604, 605, 606, 607, 608, 609, 610, 611, 612, 613, 614, 615, 616, 617, 618, 619, 620, 621, 622, 623, 624, 625, 626, 627, 628, 629, 630, 631, 632, 633, 634, 635, 636, 637, 638, 639, 640, 641, 642, 643, 644, 645, 646, 647, 648, 649, 650, 651, 652, 653, 654, 655, 656, 657, 658, 659, 660, 661, 662, 663, 664, 665, 666, 667, 668, 669, 670, 671, 672, 673, 674, 675, 676, 677, 678, 679, 680, 681, 682, 683, 684, 685, 686, 687, 688, 689, 690, 691, 692, 693, 694, 695, 696, 697, 698, 699, 700, 701, 702, 703, 704, 705, 706, 707, 708, 709, 710, 711, 712, 713, 714, 715, 716, 717, 718, 719, 720, 721, 722, 723, 724, 725, 726, 727, 728, 729, 730, 731, 732, 733, 734, 735, 736, 737, 738, 739, 740, 741, 742, 743, 744, 745, 746, 747, 748, 749, 750, 751, 752, 753, 754, 755, 756, 757, 758, 759, 760, 761, 762, 763, 764, 765, 766, 767, 768, 769, 770, 771, 772, 773, 774, 775, 776, 777, 778, 779, 780, 781, 782, 783, 784, 785, 786, 787, 788, 789, 790, 791, 792, 793, 794, 795, 796, 797, 798, 799, 800, 801, 802, 803, 804, 805, 806, 807, 808, 809, 810, 811, 812, 813, 814, 815, 816, 817, 818, 819, 820, 821, 822, 823, 824, 825, 826, 827, 828, 829, 830, 831, 832, 833, 834, 835, 836, 837, 838, 839, 840, 841, 842, 843, 844, 845, 846, 847, 848, 849, 850, 851, 852, 853, 854, 855, 856, 857, 858, 859, 860, 861, 862, 863, 864, 865, 866, 867, 868, 869, 870, 871, 872, 873, 874, 875, 876, 877, 878, 879, 880, 881, 882, 883, 884, 885, 886, 887, 888, 889, 890, 891, 892, 893, 894, 895, 896, 897, 898, 899, 900, 901, 902, 903, 904, 905, 906, 907, 908, 909, 910, 911, 912, 913, 914, 915, 916, 917, 918, 919, 920, 921, 922, 923, 924, 925, 926, 927, 928, 929, 930, 931, 932, 933, 934, 935, 936, 937, 938, 939, 940, 941, 942, 943, 944, 945, 946, 947, 948, 949, 950, 951, 952, 953, 954, 955, 956, 957, 958, 959, 960, 961, 962, 963, 964, 965, 966, 967, 968, 969, 970, 971, 972, 973, 974, 975, 976, 977, 978, 979, 980, 981, 982, 983, 984, 985, 986, 987, 988, 989, 990, 991, 992, 993, 994, 995, 996, 997, 998, 999, 1000.

1880 Census of Michigan showing Mary Bondy (later wife of Joseph Raymond) living with her parents Thomas Bondy and Matilda Samantha Bondy. Note that Mary Bondy had a brother named Philip.

SYMPHOROSE OUAOUAGOUKOUÉ AND THE ORIGIN OF THE ILLINI

470

To the Honorable Secretary of State of Michigan:

Return of Marriages in the County of

Wayne 132

Record Number	Month	Day	Year	Full Name of Bridegroom and Full Name of Bride	Age of Bridegroom	Place of Birth of Bridegroom	Age of Bride	Place of Birth of Bride	Occupation of Bridegroom	Kind of Father of Bridegroom	Married Name of Mother of Bridegroom	Date of Marriage	Place of Marriage	Name and Official Position of Person at which Married	Witnesses to Marriage	
1722	Nov.	5	1894	Harry Taylor Marion Munn	44	Blk Detroit Mich	44	Blk Detroit Mich	Sales	Canada	Canada	Nov 5 1894	Detrit	A. J. Patton	W. A. Gains Mary Munn	Detrit Mich
1722	"	8	"	Joe L. L. L. Mary L. L.	23	Blk Detroit Mich	23	Blk Detroit Mich	Laborer	Germany	Germany	" 19 "	Detrit	N. J. L. L.	Anton J. J.	Detrit Mich
1722	"	8	"	Joe Stargis Adolph Stargis	26	Detrit Mich	26	Detrit Mich	Laborer	Germany	Germany	" 19 "	Detrit	N. J. L. L.	Anton J. J.	Detrit Mich
1723	"	9	"	Harry R. Simpson Genie R. Simpson	36	Detrit Mich	36	Detrit Mich	Schoolmaster	England	England	" 9 "	Detrit	S. O. Jones	W. A. Gains	Detrit Mich
1723	"	9	"	Henry W. Miller Paula S. Miller	34	Detrit Mich	34	Detrit Mich	Teacher	Germany	Germany	" 9 "	Detrit	S. O. Jones	W. A. Gains	Detrit Mich
1723	"	9	"	Henry W. Miller Paula S. Miller	34	Detrit Mich	34	Detrit Mich	Teacher	Germany	Germany	" 9 "	Detrit	S. O. Jones	W. A. Gains	Detrit Mich
1723	"	9	"	Henry W. Miller Paula S. Miller	34	Detrit Mich	34	Detrit Mich	Teacher	Germany	Germany	" 9 "	Detrit	S. O. Jones	W. A. Gains	Detrit Mich
1723	"	9	"	Henry W. Miller Paula S. Miller	34	Detrit Mich	34	Detrit Mich	Teacher	Germany	Germany	" 9 "	Detrit	S. O. Jones	W. A. Gains	Detrit Mich
1723	"	9	"	Henry W. Miller Paula S. Miller	34	Detrit Mich	34	Detrit Mich	Teacher	Germany	Germany	" 9 "	Detrit	S. O. Jones	W. A. Gains	Detrit Mich
1723	"	9	"	Henry W. Miller Paula S. Miller	34	Detrit Mich	34	Detrit Mich	Teacher	Germany	Germany	" 9 "	Detrit	S. O. Jones	W. A. Gains	Detrit Mich
1723	"	9	"	Henry W. Miller Paula S. Miller	34	Detrit Mich	34	Detrit Mich	Teacher	Germany	Germany	" 9 "	Detrit	S. O. Jones	W. A. Gains	Detrit Mich
1723	"	9	"	Henry W. Miller Paula S. Miller	34	Detrit Mich	34	Detrit Mich	Teacher	Germany	Germany	" 9 "	Detrit	S. O. Jones	W. A. Gains	Detrit Mich
1723	"	9	"	Henry W. Miller Paula S. Miller	34	Detrit Mich	34	Detrit Mich	Teacher	Germany	Germany	" 9 "	Detrit	S. O. Jones	W. A. Gains	Detrit Mich
1723	"	9	"	Henry W. Miller Paula S. Miller	34	Detrit Mich	34	Detrit Mich	Teacher	Germany	Germany	" 9 "	Detrit	S. O. Jones	W. A. Gains	Detrit Mich
1723	"	9	"	Henry W. Miller Paula S. Miller	34	Detrit Mich	34	Detrit Mich	Teacher	Germany	Germany	" 9 "	Detrit	S. O. Jones	W. A. Gains	Detrit Mich
1723	"	9	"	Henry W. Miller Paula S. Miller	34	Detrit Mich	34	Detrit Mich	Teacher	Germany	Germany	" 9 "	Detrit	S. O. Jones	W. A. Gains	Detrit Mich
1723	"	9	"	Henry W. Miller Paula S. Miller	34	Detrit Mich	34	Detrit Mich	Teacher	Germany	Germany	" 9 "	Detrit	S. O. Jones	W. A. Gains	Detrit Mich
1723	"	9	"	Henry W. Miller Paula S. Miller	34	Detrit Mich	34	Detrit Mich	Teacher	Germany	Germany	" 9 "	Detrit	S. O. Jones	W. A. Gains	Detrit Mich
1723	"	9	"	Henry W. Miller Paula S. Miller	34	Detrit Mich	34	Detrit Mich	Teacher	Germany	Germany	" 9 "	Detrit	S. O. Jones	W. A. Gains	Detrit Mich
1723	"	9	"	Henry W. Miller Paula S. Miller	34	Detrit Mich	34	Detrit Mich	Teacher	Germany	Germany	" 9 "	Detrit	S. O. Jones	W. A. Gains	Detrit Mich
1723	"	9	"	Henry W. Miller Paula S. Miller	34	Detrit Mich	34	Detrit Mich	Teacher	Germany	Germany	" 9 "	Detrit	S. O. Jones	W. A. Gains	Detrit Mich
1723	"	9	"	Henry W. Miller Paula S. Miller	34	Detrit Mich	34	Detrit Mich	Teacher	Germany	Germany	" 9 "	Detrit	S. O. Jones	W. A. Gains	Detrit Mich
1723	"	9	"	Henry W. Miller Paula S. Miller	34	Detrit Mich	34	Detrit Mich	Teacher	Germany	Germany	" 9 "	Detrit	S. O. Jones	W. A. Gains	Detrit Mich
1723	"	9	"	Henry W. Miller Paula S. Miller	34	Detrit Mich	34	Detrit Mich	Teacher	Germany	Germany	" 9 "	Detrit	S. O. Jones	W. A. Gains	Detrit Mich
1723	"	9	"	Henry W. Miller Paula S. Miller	34	Detrit Mich	34	Detrit Mich	Teacher	Germany	Germany	" 9 "	Detrit	S. O. Jones	W. A. Gains	Detrit Mich
1723	"	9	"	Henry W. Miller Paula S. Miller	34	Detrit Mich	34	Detrit Mich	Teacher	Germany	Germany	" 9 "	Detrit	S. O. Jones	W. A. Gains	Detrit Mich
1723	"	9	"	Henry W. Miller Paula S. Miller	34	Detrit Mich	34	Detrit Mich	Teacher	Germany	Germany	" 9 "	Detrit	S. O. Jones	W. A. Gains	Detrit Mich
1723	"	9	"	Henry W. Miller Paula S. Miller	34	Detrit Mich	34	Detrit Mich	Teacher	Germany	Germany	" 9 "	Detrit	S. O. Jones	W. A. Gains	Detrit Mich
1723	"	9	"	Henry W. Miller Paula S. Miller	34	Detrit Mich	34	Detrit Mich	Teacher	Germany	Germany	" 9 "	Detrit	S. O. Jones	W. A. Gains	Detrit Mich
1723	"	9	"	Henry W. Miller Paula S. Miller	34	Detrit Mich	34	Detrit Mich	Teacher	Germany	Germany	" 9 "	Detrit	S. O. Jones	W. A. Gains	Detrit Mich
1723	"	9	"	Henry W. Miller Paula S. Miller	34	Detrit Mich	34	Detrit Mich	Teacher	Germany	Germany	" 9 "	Detrit	S. O. Jones	W. A. Gains	Detrit Mich
1723	"	9	"	Henry W. Miller Paula S. Miller	34	Detrit Mich	34	Detrit Mich	Teacher	Germany	Germany	" 9 "	Detrit	S. O. Jones	W. A. Gains	Detrit Mich
1723	"	9	"	Henry W. Miller Paula S. Miller	34	Detrit Mich	34	Detrit Mich	Teacher	Germany	Germany	" 9 "	Detrit	S. O. Jones	W. A. Gains	Detrit Mich
1723	"	9	"	Henry W. Miller Paula S. Miller	34	Detrit Mich	34	Detrit Mich	Teacher	Germany	Germany	" 9 "	Detrit	S. O. Jones	W. A. Gains	Detrit Mich
1723	"	9	"	Henry W. Miller Paula S. Miller	34	Detrit Mich	34	Detrit Mich	Teacher	Germany	Germany	" 9 "	Detrit	S. O. Jones	W. A. Gains	Detrit Mich
1723	"	9	"	Henry W. Miller Paula S. Miller	34	Detrit Mich	34	Detrit Mich	Teacher	Germany	Germany	" 9 "	Detrit	S. O. Jones	W. A. Gains	Detrit Mich
1723	"	9	"	Henry W. Miller Paula S. Miller	34	Detrit Mich	34	Detrit Mich	Teacher	Germany	Germany	" 9 "	Detrit	S. O. Jones	W. A. Gains	Detrit Mich
1723	"	9	"	Henry W. Miller Paula S. Miller	34	Detrit Mich	34	Detrit Mich	Teacher	Germany	Germany	" 9 "	Detrit	S. O. Jones	W. A. Gains	Detrit Mich
1723	"	9	"	Henry W. Miller Paula S. Miller	34	Detrit Mich	34	Detrit Mich	Teacher	Germany	Germany	" 9 "	Detrit	S. O. Jones	W. A. Gains	Detrit Mich
1723	"	9	"	Henry W. Miller Paula S. Miller	34	Detrit Mich	34	Detrit Mich	Teacher	Germany	Germany	" 9 "	Detrit	S. O. Jones	W. A. Gains	Detrit Mich
1723	"	9	"	Henry W. Miller Paula S. Miller	34	Detrit Mich	34	Detrit Mich	Teacher	Germany	Germany	" 9 "	Detrit	S. O. Jones	W. A. Gains	Detrit Mich
1723	"	9	"	Henry W. Miller Paula S. Miller	34	Detrit Mich	34	Detrit Mich	Teacher	Germany	Germany	" 9 "	Detrit	S. O. Jones	W. A. Gains	Detrit Mich
1723	"	9	"	Henry W. Miller Paula S. Miller	34	Detrit Mich	34	Detrit Mich	Teacher	Germany	Germany	" 9 "	Detrit	S. O. Jones	W. A. Gains	Detrit Mich
1723	"	9	"	Henry W. Miller Paula S. Miller	34	Detrit Mich	34	Detrit Mich	Teacher	Germany	Germany	" 9 "	Detrit	S. O. Jones	W. A. Gains	Detrit Mich
1723	"	9	"	Henry W. Miller Paula S. Miller	34	Detrit Mich	34	Detrit Mich	Teacher	Germany	Germany	" 9 "	Detrit	S. O. Jones	W. A. Gains	Detrit Mich
1723	"	9	"	Henry W. Miller Paula S. Miller	34	Detrit Mich	34	Detrit Mich	Teacher	Germany	Germany	" 9 "	Detrit	S. O. Jones	W. A. Gains	Detrit Mich
1723	"	9	"	Henry W. Miller Paula S. Miller	34	Detrit Mich	34	Detrit Mich	Teacher	Germany	Germany	" 9 "	Detrit	S. O. Jones	W. A. Gains	Detrit Mich
1723	"	9	"	Henry W. Miller Paula S. Miller	34	Detrit Mich	34	Detrit Mich	Teacher	Germany	Germany	" 9 "	Detrit	S. O. Jones	W. A. Gains	Detrit Mich
1723	"	9	"	Henry W. Miller Paula S. Miller	34	Detrit Mich	34	Detrit Mich	Teacher	Germany	Germany	" 9 "	Detrit	S. O. Jones	W. A. Gains	Detrit Mich
1723	"	9	"	Henry W. Miller Paula S. Miller	34	Detrit Mich	34	Detrit Mich	Teacher	Germany	Germany	" 9 "	Detrit	S. O. Jones	W. A. Gains	Detrit Mich
1723	"	9	"	Henry W. Miller Paula S. Miller	34	Detrit Mich	34	Detrit Mich	Teacher	Germany	Germany	" 9 "	Detrit	S. O. Jones	W. A. Gains	Detrit Mich
1723	"	9	"	Henry W. Miller Paula S. Miller	34	Detrit Mich	34	Detrit Mich	Teacher	Germany	Germany	" 9 "	Detrit	S. O. Jones	W. A. Gains	Detrit Mich
1723	"	9	"	Henry W. Miller Paula S. Miller	34	Detrit Mich	34	Detrit Mich	Teacher	Germany	Germany	" 9 "	Detrit	S. O. Jones	W. A. Gains	Detrit Mich
1723	"	9	"	Henry W. Miller Paula S. Miller	34	Detrit Mich	34	Detrit Mich	Teacher	Germany	Germany	" 9 "	Detrit	S. O. Jones	W. A. Gains	Detrit Mich
1723	"	9	"	Henry W. Miller Paula S. Miller	34	Detrit Mich	34	Detrit Mich	Teacher	Germany	Germany	" 9 "	Detrit	S. O. Jones	W. A. Gains	Detrit Mich
1723	"	9	"	Henry W. Miller Paula S. Miller	34	Detrit Mich	34	Detrit Mich	Teacher	Germany	Germany	" 9 "	Detrit	S. O. Jones	W. A. Gains	Detrit Mich
1723	"	9	"	Henry W. Miller Paula S. Miller	34	Detrit Mich	34	Detrit Mich	Teacher	Germany	Germany	" 9 "	Detrit	S. O. Jones	W. A. Gains	Detrit Mich
1723	"	9	"	Henry W. Miller Paula S. Miller	34	Detrit Mich	34	Detrit Mich	Teacher	Germany	Germany	" 9 "	Detrit	S. O. Jones	W. A. Gains	Detrit Mich
1723	"	9	"	Henry W. Miller Paula S. Miller	34	Detrit Mich	34	Detrit Mich	Teacher	Germany	Germany	" 9 "	Detrit	S. O. Jones	W. A. Gains	Detrit Mich
1723	"	9	"	Henry W. Miller Paula S. Miller	34	Detrit Mich	34	Detrit Mich	Teacher	Germany	Germany	" 9 "	Detrit	S. O. Jones	W. A. Gains	Detrit Mich
1723	"	9	"	Henry W. Miller Paula S. Miller	34	Detrit Mich	34	Detrit Mich	Teacher	Germany	Germany	" 9 "	Detrit	S. O. Jones	W. A. Gains	Detrit Mich
1723	"	9	"	Henry W. Miller Paula S. Miller	34	Detrit Mich	34	Detrit Mich	Teacher	Germany	Germany	" 9 "	Detrit	S. O. Jones	W. A. Gains	Detrit Mich
1723	"	9	"	Henry W. Miller Paula S. Miller	34	Detrit Mich	34	Detrit Mich	Teacher	Germany	Germany	" 9 "	Detrit	S. O. Jones	W. A. Gains	Detrit Mich
1723	"	9	"	Henry W. Miller Paula S. Miller	34	Detrit Mich	34	Detrit Mich	Teacher	Germany	Germany	" 9 "	Detrit	S. O. Jones	W. A. Gains	Detrit Mich
1723	"	9	"	Henry W. Miller Paula S. Miller	34	Detrit Mich	34	Detrit Mich	Teacher	Germany	Germany	" 9 "	Detrit	S. O. Jones	W. A. Gains	Detrit Mich
1723	"	9	"	Henry W. Miller Paula S. Miller	34	Detrit Mich	34	Detrit Mich	Teacher	Germany	Germany	" 9 "	Detrit	S. O. Jones	W. A. Gains	Detrit Mich
1723	"	9	"	Henry W. Miller Paula S. Miller	34	Detrit Mich	34	Detrit Mich	Teacher	Germany	Germany	" 9 "	Detrit	S. O. Jones	W. A. Gains	Detrit Mich
1723	"	9	"	Henry W. Miller Paula S. Miller	34	Detrit Mich	34	Detrit Mich	Teacher	Germany	Germany	" 9 "	Detrit	S. O. Jones	W. A. Gains	Detrit Mich
1723	"	9	"	Henry W. Miller Paula S. Miller	34	Detrit Mich	34	Detrit Mich	Teacher	Germany	Germany	" 9 "	Detrit	S. O. Jones	W. A. Gains	Detrit Mich
1723	"	9	"	Henry W. Miller Paula S. Miller	34	Detrit Mich	34	Detrit Mich	Teacher	Germany	Germany	" 9 "	Detrit	S. O. Jones	W. A. Gains	Detrit Mich
1723	"	9	"	Henry W. Miller Paula S. Miller	34	Detrit Mich	34	Detrit Mich	Teacher	Germany	Germany	" 9 "	Detrit	S. O. Jones	W. A. Gains	Detrit Mich
1723	"	9	"	Henry W. Miller Paula S. Miller	34	Detrit Mich	34	Detrit Mich	Teacher	Germany	Germany	" 9 "	Detrit	S. O. Jones	W. A. Gains	Detrit Mich
1723	"	9	"	Henry W. Miller Paula S. Miller	34	Detrit Mich	34	Detrit Mich	Teacher	Germany	Germany	" 9 "	Detrit	S. O. Jones	W. A. Gains	Detrit Mich
1723	"	9	"	Henry W. Miller Paula S. Miller	34	Detrit Mich	34	Detrit Mich	Teacher	Germany	Germany	" 9 "	Detrit	S. O. Jones	W. A. Gains	Detrit Mich
1723	"	9	"	Henry W. Miller Paula S. Miller	34	Detrit Mich	34	Detrit Mich	Teacher	Germany	Germany	" 9 "	Detrit	S. O. Jones	W. A. Gains	Detrit Mich
1723	"	9	"	Henry W. Miller Paula S. Miller	34	Detrit Mich	34	Detrit Mich	Teacher	Germany	Germany	" 9 "	Detrit	S. O. Jones	W. A. Gains	Detrit Mich
1723	"	9	"	Henry W. Miller Paula S. Miller	34	Detrit Mich	34	Detrit Mich	Teacher	Germany	Germany	" 9 "	Detrit	S. O. Jones	W. A. Gains	Detrit Mich
1723	"	9	"	Henry W. Miller Paula S. Miller	34	Detrit Mich	34	Detrit Mich	Teacher	Germany	Germany	" 9 "	Detrit	S. O. Jones	W. A. Gains	Detrit Mich
1723	"	9	"	Henry W. Miller Paula S. Miller	34	Detrit Mich	34	Detrit Mich	Teacher	Germany	Germany	" 9 "	Detrit	S. O. Jones	W. A. Gains	Detrit Mich
1723	"	9	"	Henry W. Miller Paula S. Miller	34	Detrit Mich	34	Detrit Mich	Teacher	Germany	Germany	" 9 "	Detrit	S. O. Jones	W. A. Gains	Detrit Mich
1723	"	9	"	Henry W. Miller Paula S. Miller	34	Detrit Mich	34	Detrit Mich	Teacher	Germany	Germany	" 9 "	Detrit	S. O. Jones	W. A. Gains	Detrit Mich
1723	"	9	"	Henry W. Miller Paula S. Miller	34	Detrit Mich	34	Detrit Mich	Teacher	Germany	Germany	" 9 "	Detrit	S. O. Jones	W. A. Gains	Detrit Mich
1723	"	9	"	Henry W. Miller Paula S. Miller	34	Detrit Mich	34	Detrit Mich	Teacher	Germany	Germany	" 9 "	Detrit	S. O. Jones	W. A. Gains	Detrit Mich
1723	"	9	"	Henry W. Miller Paula S. Miller	34	Detrit Mich	34	Detrit Mich	Teacher	Germany	Germany	" 9 "	Detrit	S. O. Jones	W. A. Gains	Detrit Mich
1723	"	9	"	Henry W. Miller Paula S. Miller	34	Detrit Mich	34	Detrit Mich	Teacher	Germany	Germany	" 9 "	Detrit	S. O. Jones	W. A. Gains	Detrit Mich
1723	"	9	"	Henry W. Miller Paula S. Miller	34	Detrit Mich	34	Detrit Mich	Teacher	Germany	Germany	" 9 "	Detrit	S. O. Jones	W. A. Gains	Detrit Mich
1723	"	9	"	Henry W. Miller Paula S. Miller	34	Detrit Mich	34	Detrit Mich	Teacher	Germany	Germany	" 9 "	Detrit	S. O. Jones	W. A. Gains	Detrit Mich
1723	"	9	"	Henry W. Miller Paula S. Miller	34	Detrit Mich	34	Detrit Mich	Teacher	Germany	Germany	" 9 "	Detrit	S.		

Marriage record of Philip Bondy, son of Thomas Bondy and Matilda Samantha Bondy and brother of Mary Bondy. This record shows that the maiden name of Matilda (Tillie) Bondy was Bondy.

1900 Census of Michigan showing the family of Thomas Bondy and Matilda Samantha Bondy. This record shows that Mary Bondy had a younger brother named George.

45

rian

Marriage record of George Bondy, son of Thomas Bondy and Matilda Samantha Bondy and brother of Mary Bondy, wife of Joseph Raymond. Like the above marriage record of Philip Bondy, this marriage record shows that the maiden name of Matilda Bondy was Bondy.

adjan

[illegible]

Joseph Raymond
ly and Matilda
(nue) in Wyand
lda, Samantha

SYMPHOROSE OUAOUAGOUKOUÉ AND THE ORIGIN OF THE ILLINI

STATE Michigan COUNTY Wyandotte TOWNSHIP OR OTHER DIVISION OF COUNTY Wyandotte NAME OF INCORPORATED PLACE Wyandotte City WARD OF CITY Tenth SUPERVISOR'S DISTRICT NO. 14 SHEET NO. 14 B

DEPARTMENT OF COMMERCE-BUREAU OF THE CENSUS
FOURTEENTH CENSUS OF THE UNITED STATES: 1920-POPULATION
ENUMERATED BY ME ON THE 2nd DAY OF February 1920

PLACE OF BIRTH	RACE	SEX	AGE	MARRIAGE	CITIZENSHIP	EDUCATION	MOTHER'S BIRTH		FATHER'S BIRTH		OCCUPATION
							Place of birth	Race	Place of birth	Race	
Michigan	W	M	30	1	19	High School	Michigan	W	Michigan	W	Teacher
Michigan	W	F	28	1	19	High School	Michigan	W	Michigan	W	Teacher
Michigan	W	M	26	1	19	High School	Michigan	W	Michigan	W	Teacher
Michigan	W	F	24	1	19	High School	Michigan	W	Michigan	W	Teacher
Michigan	W	M	22	1	19	High School	Michigan	W	Michigan	W	Teacher
Michigan	W	F	20	1	19	High School	Michigan	W	Michigan	W	Teacher
Michigan	W	M	18	1	19	High School	Michigan	W	Michigan	W	Teacher
Michigan	W	F	16	1	19	High School	Michigan	W	Michigan	W	Teacher
Michigan	W	M	14	1	19	High School	Michigan	W	Michigan	W	Teacher
Michigan	W	F	12	1	19	High School	Michigan	W	Michigan	W	Teacher
Michigan	W	M	10	1	19	High School	Michigan	W	Michigan	W	Teacher
Michigan	W	F	8	1	19	High School	Michigan	W	Michigan	W	Teacher
Michigan	W	M	6	1	19	High School	Michigan	W	Michigan	W	Teacher
Michigan	W	F	4	1	19	High School	Michigan	W	Michigan	W	Teacher
Michigan	W	M	2	1	19	High School	Michigan	W	Michigan	W	Teacher
Michigan	W	F	0	1	19	High School	Michigan	W	Michigan	W	Teacher

1920 Census of Michigan (Sheet No. 14B) showing Charles Raymond also living at 50 Albion Street in Wyandotte. The name of Albion Street (or Avenue) is written more clearly in this record.

SYMPHOROSE OUAOUAGOUKOUÉ AND THE ORIGIN OF THE ILLINI

1 PLACE OF DEATH		MICHIGAN DEPARTMENT OF HEALTH		882 1145	
County <u>Wayne</u>		Division of Vital Statistics			
Township		CERTIFICATE OF DEATH		Register No. <u>361</u>	
Village		Eilbert Hospital		(No. (If death occurred in a hospital or institution, give its NAME instead of street and number)	
City <u>Wyandotte</u>		St. Ward		Ward	
2 FULL NAME <u>Tillie Bondy</u>					
a) Residence No. <u>50 Albion Ave.</u> St. Ward					
(Usual place of abode)					
Length of residence in city or town where death occurred <u>9</u> yrs. mos. ds. (If non-resident give city or town and state)					
How long in U. S., if of foreign birth? yrs. mos. ds.					
PERSONAL AND STATISTICAL PARTICULARS			MEDICAL CERTIFICATE OF DEATH		
3 SEX <u>Female</u>	4 Color or Race <u>White</u>	5 Single, Married, Widowed or Divorced (Write the word) <u>Widow</u>	16 DATE OF DEATH (Month, day and year) <u>Dec. 13th.</u> 192 <u>5</u>		
5a If married, widowed or divorced HUSBAND of (or) WIFE of <u>Thomas Bondy</u>			17 I HEREBY CERTIFY, That I attended deceased from <u>Dec. 13</u> , 19 <u>25</u> , to <u>Dec. 13</u> , 19 <u>25</u> , and that I last saw her alive on <u>Dec. 13</u> , 19 <u>25</u> , and that death occurred on the date stated above at <u>10:10 a.m.</u>		
6 DATE OF BIRTH (Month, day and year) <u>Jan. 1st. 1841</u>			The CAUSE OF DEATH was as follows: <u>Was dead when I saw her. 188.3</u>		
7 AGE Years <u>84</u>	Months <u>11</u>	Days <u>12</u> If LESS than 1 day... hrs. OR... min.	<u>Examination of body showed evidence of fractured skull due to auto accident.</u>		
8 OCCUPATION OF DECEASED (a) Trade, profession or particular kind of work <u>Retired</u>			CONTRIBUTORY (Secondary) <u>None</u>		
(b) General nature of industry, business, or establishment in which employed (or employer) <u>90</u>			18 Where was disease contracted If not at place of death?		
(c) Name of employer.			Did an operation precede death? <u>Yes</u> Date of <u>Dec. 14</u>		
9 BIRTHPLACE (city or town) (state or country) <u>Rockwood Michigan</u>			Was there an autopsy? <u>Yes</u>		
10 NAME OF FATHER <u>Unknown</u>			What test confirmed diagnosis? <u>See 18</u>		
11 BIRTHPLACE OF FATHER (city or town) (state or country) <u>Rockwood Mich.</u>			(Signed) <u>P. J. Quinn</u> M. D.		
12 MAIDEN NAME OF MOTHER <u>Unknown</u>			<u>Dec. 14</u> , 19 <u>25</u> , Address <u>Wyandotte</u>		
13 BIRTHPLACE OF MOTHER (city or town) (state or country) <u>Unknown</u>			*State the Disease Causing Death, or in deaths from Violent Causes, state (1) Means and Nature of Injury, and (2) whether Accidental, Suicidal, or Homicidal. (See reverse side for further instructions.)		
14 Informant <u>Mrs. Mary Raymond</u> (Address) <u>Wyandotte Mich.</u>			19 PLACE OF BURIAL, CREMATION, OR REMOVAL <u>Escoire Cemetery</u> Date of Burial <u>Dec. 16, 1925</u>		
15 Filed <u>Dec. 15</u> , 192 <u>5</u> <u>P. J. Quinn</u> Registrar			20 UNDERTAKER <u>J. J. Schmitt</u> Address <u>Wyandotte</u>		

Death record of Matilda 'Tillie' Bondy, wife of Thomas Bondy. Note that Matilda's address was at this time 50 Albion Avenue (Street) and that the informant was Mary Raymond (née Bondy). Matilda, though not recorded as living with her daughter Mary Raymond in 1920, was, in fact, living with Mary and her husband Joseph Raymond at 50 Albion Street in 1920, or at least by 1925. The 1920 Census record shown above, the marriage record of Philip Bondy, the marriage record of George Bondy, the birth record of Mary Bondy, and the death record of Matilda Bondy, prove that the name of the mother of Mary Bondy (wife of Joseph Raymond) was Matilda Bondy or Matilda Samantha Bondy, better known as, and usually called, Tillie Bondy; and that Bondy was the maiden name of Matilda, wife of Thomas Bondy.

The above death record of Matilda (Tillie) Bondy shows that Rockwood was the birthplace of Matilda Bondy. When Matilda Bondy was born in 1840 (her birth year recorded in the 1900 Census of Michigan accords with her birth year indicated in the 1850 Census of Michigan, effectively ruling out 1841 as her birth year), however, Rockwood did not exist, nor did South Rockwood. It was not until after 1860 that one John Strong gave the name Rockwood to land on the north side of the Huron River, and the name South Rockwood to land on the south side of the Huron.¹¹ In 1840, where South Rockwood is now located, was Ash Township, Berlin Township not being organized out of Ash until 1867;¹² and where Rockwood is now, was, in 1840, if not Ash Township or regarded as such, Brownstown Township. Now, the 1850 Census of Michigan was taken when Matilda Bondy was ten years old. In 1850, as the census shows, there was no Matilda Bondy of any age living in Brownstown Township.¹³ The same census shows, however, that a ten-year-old (the original document shows that she was ten) Matilda Bondy was living in Ash Township. (In 1850, she was the only Matilda Bondy living in Ash Township.) That Matilda Bondy was the daughter of Basile Bondy and Angelique Elizabeth Lamirande; and it was that Matilda Bondy who married her second cousin Thomas Bondy.

¹¹ "Rockwood, Michigan," InfoMI, accessed May 12, 2015, <http://www.infomi.com/city/rockwood/>.

¹² John McClelland Bulkley, *History of Monroe County Michigan*, Volume 1 (The Lewis Publishing Company, 1913), pp. 492-493.

¹³ "All 1850 United States Federal Census results for Matilda Bondy," Ancestry, accessed May 12, 2015, https://www.ancestry.com/search/collections/1850usfedcenancestry/?name=Matilda+Bondy&birth=michigan-usa_25&birth_x=1-0&count=50.

SYMPHOROSE OUAOUAGOUKOUÉ AND THE ORIGIN OF THE ILLINI

886 728

SCHEDULE I.—Free Inhabitants in *Township of Ash* **in the County of** *Monroe* **State**
of Michigan **enumerated by me, on the** *27* **day of** *Sept* **1850.** *A. G. Baker* Ass't Marshal

Dwelling-house number of inhabitants		The Name of every Person whose usual place of abode on the first day of June, 1850, was in this family.		Description.			Profession, Occupation, or Trade of each Male Person over 15 years of age.		Value of Real Estate owned.		Place of Birth, Naming the State, Territory, or Country.		Married within the year, or School within the year, or both, or neither.		Whether deaf and blind, insane, idiotic, pauper, or convict.	
1	2	3	4	5	6	7	8	9	10	11	12	13	14	15	16	17
142	142	Baron Selmon	19	M							Mich.					
		Richard "	13	M							"					
		John Nelson	22	M		Farmer					"					
152	152	Joseph Colyer	31	M		Farmer	200	Canada								
		John "	24	M							Mich.					
		Joseph "	1	M							"					
		Margaret "	6	F							"					
		David "	1	M							"					
154	154	Frank Conflam	24	M		Farmer	200	"								
		Emily "	21	F							"					
		Frank "	3	M							"					
152	152	Joseph Conflam	22	M		Farmer	200	"								
		Eliza "	17	F							"					
156	156	Basil Bondie	24	M		Farmer	200	"								
		Elizabeth "	37	F							"					
		Elizabeth "	25	F							"					
		Joseph "	22	M		Farmer		"								
		Alvin "	21	M							"					
		Edward "	16	M							"					
		David "	14	M							"					
		Emily "	12	F							"					
		Matilda "	10	F							"					
		Emily "	8	F							"					
		Alvin "	5	M							"					
157	157	Frank Bondie	20	M		Farmer	200	"								
		Mary "	21	F							"					
		Elizabeth "	6	F							"					
		Mary "	4	F							"					
		John Bt "	12	M							"					
158	158	John Colyer	31	M		Farmer	200	"								
		Mary "	23	F							"					
		Calvin "	10	M							"					
		John "	5	M							"					
		Mary "	2	F							"					
159	159	Joseph Bondie	45	M		Farmer	200	Mich.								
		Stephen "	46	M							"					
		Ann "	4	F							"					
160	160	John Conflam	25	M		Farmer	200	"								
		Stephen "	46	M							"					
		Robert "	14	M		Farmer		"								
		John Bt "	17	M							"					
		Mary "	23	F							"					

3640
1850

1850 Census of Michigan showing the family of Basile Bondy (here spelled Basil Bondie) living in Ash Township. At this time, as said above, Matilda was ten years old. Note that ten years earlier, in 1840, Matilda was the only female in the family under five years of age (she was an infant in January 1840). Note also, as this census shows, that Matilda had a brother named David, who was fourteen at the time of the 1850 census (he was born in 1835). Lastly, note that the Elizabeth who was thirty-seven at the time of this census was the second wife of Basile Bondy, his first wife Angelique Elizabeth (Dulignon dit) Lamirande having died about 1843. His second wife was Elizabeth Beaubien; she was born in 1813.



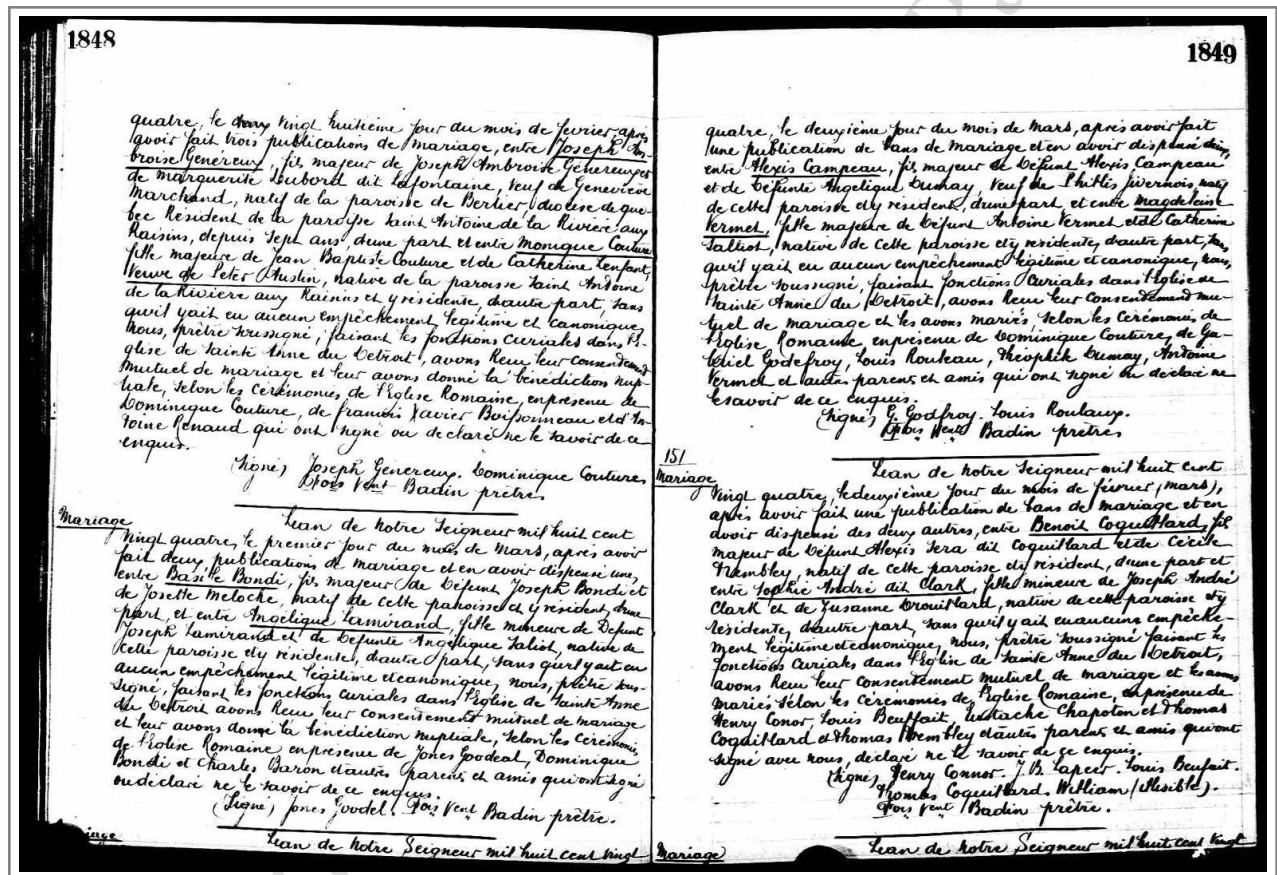
old in 1840,
Elizabe
time; she was

1 PLACE OF DEATH		MICHIGAN DEPARTMENT OF HEALTH		Division of Vital Statistics		58 1436	
County <u>Wayne</u>		TOWNSHIP <u>Monroe</u>		VILLAGE <u>Berlin</u>		Register No. <u>18</u>	
City <u>Dave Bondy</u>		(If death occurred in a hospital or institution, give its NAME instead of street and number)		St. <u>Ward</u>		Ward	
2 FULL NAME <u>Dave Bondy</u>		3 DATE OF BIRTH <u>Sept. 25, 1855</u>		4 AGE <u>90</u>		5 SEX <u>Male</u>	
6 RESIDENCE No. <u>Turnpike Road Rockwood</u>		7 OCCUPATION OF DECEASED <u>Farmer</u>		8 DATE OF DEATH <u>Oct. 18, 1925</u>		9 CAUSE OF DEATH <u>Obvious of Prostate Gland</u>	
10 BIRTHPLACE (city or town) <u>Rockwood Mich.</u>		11 NAME OF FATHER <u>Bozol Bondy</u>		12 BIRTHPLACE OF FATHER (city or town) <u>Wayne County</u>		13 MAIDEN NAME OF MOTHER <u>Elizabeth Lemorand</u>	
14 BIRTHPLACE OF MOTHER (city or town) <u>Monroe Co. Mich.</u>		15 INFORMANT <u>James Bondy</u>		16 PLACE OF BURIAL, CREMATION, OR REMOVAL <u>Rockwood Mich.</u>		17 DATE OF BURIAL <u>Oct. 20, 1925</u>	
18 UNDERTAKER <u>Frank Gallagher River Rouge</u>		19 SIGNATURE <u>P. H. Hasley</u>		20 ADDRESS <u>1414 Rockwood</u>		21 STATE THE DISEASE CAUSING DEATH, OR IN DEATHS FROM VIOLENT CAUSES, STATE (1) MEANS AND NATURE OF INJURY, AND (2) WHETHER ACCIDENTAL, SUICIDAL, OR HOMICIDE.	

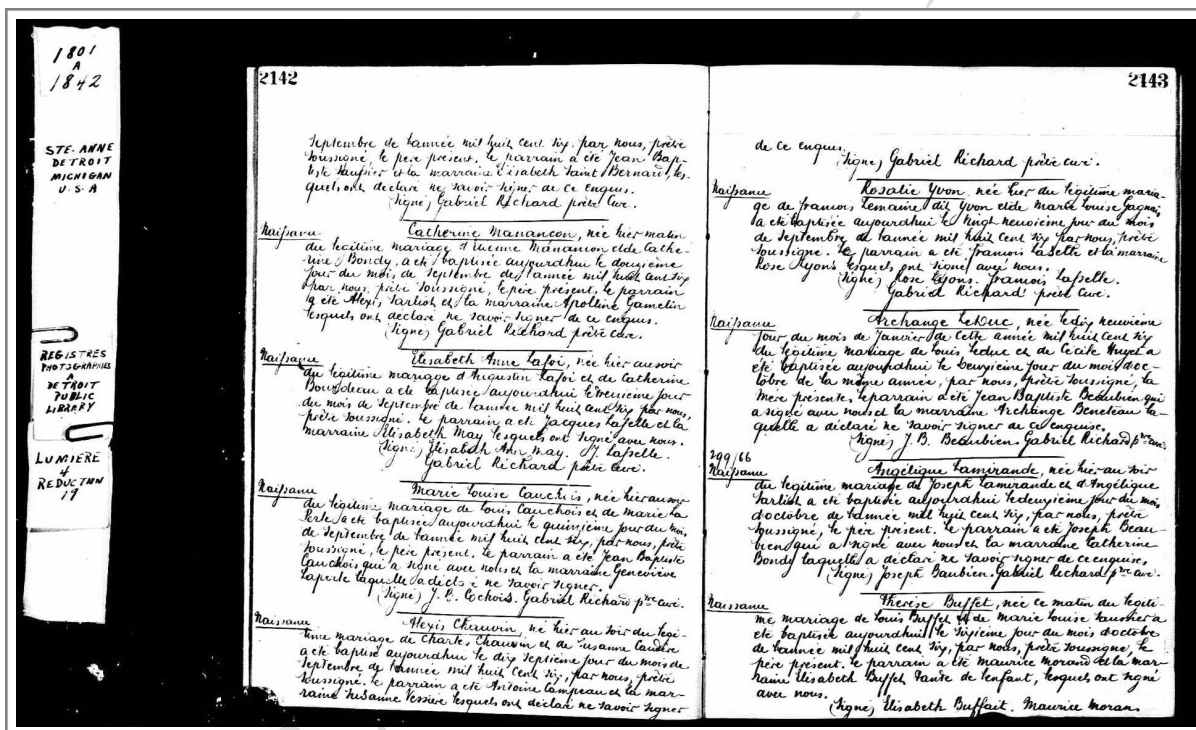
Death record of David Bondy, son of Basile (here misspelled as 'Bozol') Bondy and Angelique Elizabeth (Dulignon dit) Lamirande (here misspelled as 'Lemorand') and brother of Matilda 'Tillie' Bondy. Note that the birthplace of David Bondy is specified as Rockwood, just as Rockwood was specified as the birthplace of his sister Matilda 'Tillie' Bondy.

1437	1438
<p>nous, sous-signé, le dix février mil sept cent quatre vingt dix sept le parroissien a été Jean Baptiste Campeaux et la marraine Jeanne Beaudin qui ont signé avec nous.</p> <p>(Signé) J. B. Campeaux, Felicie Barthe, Levadour curé.</p> <p><u>Mariage</u> Jean mil sept cent quatre vingt dix sept et le huit février après avoir publié le divorce ad présent les bans de mariage et avoir dispensé de deux autres, entre la dispense du gouverneur du territoire, entre Antoine Onelle, fils majeur et légitime de feu Joseph et de Josephine Jean Louis et natif de la Ville de Québec, et Catherine Lécol, fille majeure et légitime de Jean Baptiste Lécol, et de Angélique Lavoie, de cette paroisse, nous, avons reçu leur consentement mutuel et leur avons donné la bénédiction nuptiale, présents et consentants, Jean Baptiste Lécol, père de l'époux, Joseph Bondy, Jacob Roger.</p> <p>(Signé) Antoine Onelle, Jean Baptiste Lécol, Chabert Jouveaux, François Gamelin, Joseph Borrelly, Théophile Leloup, Théophile Leloup, André Bequindelle, Jacob Roger, Levadour curé, J. Godfroy.</p> <p><u>521. Mariage</u> Angélique, née d'hier du légitime mariage d'Augustin Le Roy et de Catherine Bourdault, a été baptisée par nous, sous-signé, le quatorze février mil sept cent quatre vingt dix sept, le parroissien a été Maurice Morand et la marraine Angélique Le Roy qui ont signé avec nous. Le parroissien a été, ne s'étant pas signé de ce qu'enquies.</p> <p>(Signé) Angélique Le Roy, Levadour curé.</p> <p><u>Mariage</u> Peronique, née ce matin du légitime mariage de Pierre Hyak et de Josephine Melon, a été baptisée par nous, sous-signé, le dix sept février mil sept cent quatre vingt dix sept, le parroissien a été Charles Rivard et la marraine Genevieve Dubeau qui ont déclaré ne savoir signer de ce qu'enquies.</p> <p>(Signé) Charles Rivard, Levadour curé.</p> <p><u>Mariage</u> Basile, né ce matin du légitime mariage</p>	<p>de Joseph Bondy et de Marie Jeanne Meloche, a été baptisée par nous, le dix sept février mil sept cent quatre vingt dix sept, le parroissien a été Joseph Bondy et la marraine Angélique Godfroy qui ont signé avec nous ainsi que l'époux. Le parroissien a été, ne s'étant pas signé de ce qu'enquies.</p> <p>(Signé) Joseph Bondy, Angélique Godfroy, Levadour curé.</p> <p><u>Mariage</u> Marguerite, née d'hier du légitime mariage de Bernard Le Roy et de Marguerite Lavoie, a été baptisée par nous, sous-signé, le dix sept février mil sept cent quatre vingt dix sept, le parroissien a été Joseph Roy et la marraine Marie Anne Martin qui ont déclaré ne savoir signer de ce qu'enquies.</p> <p>(Signé) Joseph Roy, Levadour curé.</p> <p><u>Vieilles</u> Peronique, fille de Pierre Hyak, âgée de deux jours, de cédée d'hier, a été inhumée dans le cimetière de cette paroisse, le dix sept février mil sept cent quatre vingt dix sept, par nous.</p> <p>(Signé) Levadour curé.</p> <p><u>Mariage</u> Alexis, né ce matin du légitime mariage de Louis Cochois et de Françoise Laporte, a été baptisé par nous, sous-signé, le dix sept février mil sept cent quatre vingt dix sept, le parroissien a été Alexis Cochois et la marraine Rose Navarre, qui ont déclaré ne savoir signer de ce qu'enquies.</p> <p>(Signé) Levadour curé.</p> <p><u>Vieilles</u> Suzanne, fille de J. B. Toulouse, âgée environ dix jours, de cédée d'hier, a été inhumée dans le cimetière de cette paroisse, ce dix sept février mil sept cent quatre vingt dix sept, par nous, sous-signé.</p> <p>(Signé) Levadour curé.</p> <p><u>Mariage</u> Marie Anne, née le huit sept de cédée mil sept cent quatre vingt sept, du légitime mariage de Jacques Lavoie et de Catherine Lavoie, oncle de la même fille, a été baptisée par nous, sous-signé, le dix sept février mil sept cent quatre vingt sept, le parroissien a été Jean Williams</p>

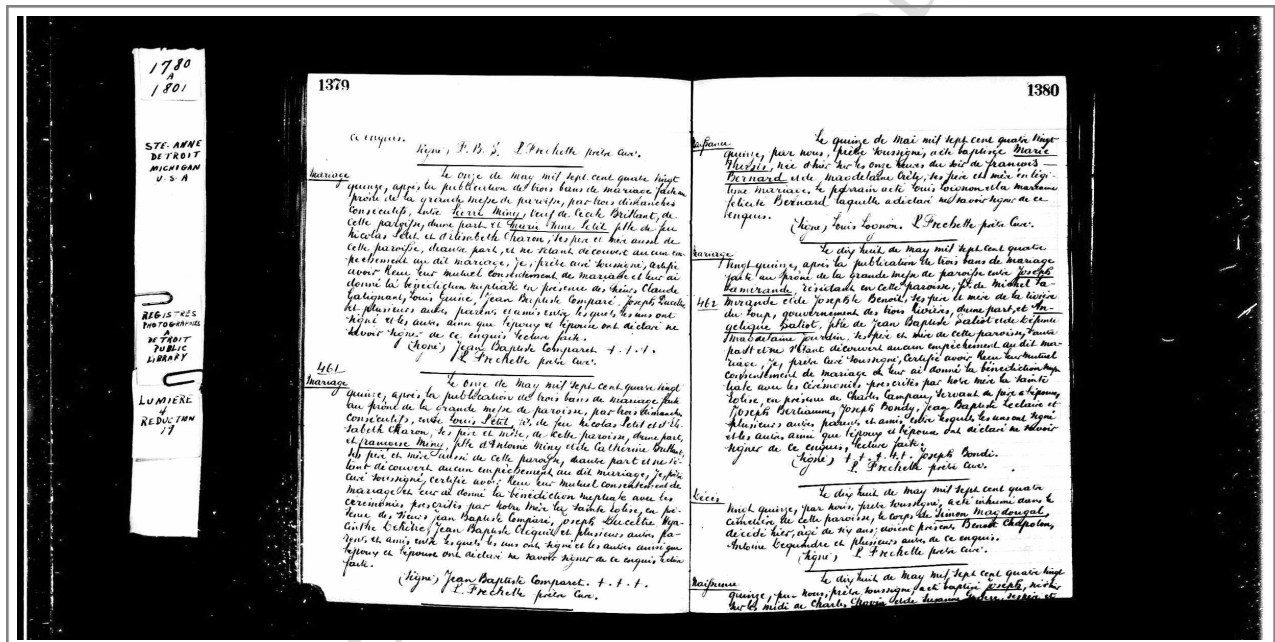
Birth record of Basile (Douaire de) Bondy, son of Joseph (Douaire de) Bondy and Marie-Jeanne Meloche and father of Matilda 'Tillie' Bondy, wife of Thomas Bondy.



Marriage record of Basile (Douaire de) Bondy and Angelique Elizabeth (Dulignon dit) Lamirande, daughter of Joseph (Dulignon dit) Lamirande and Angelique Saliot.

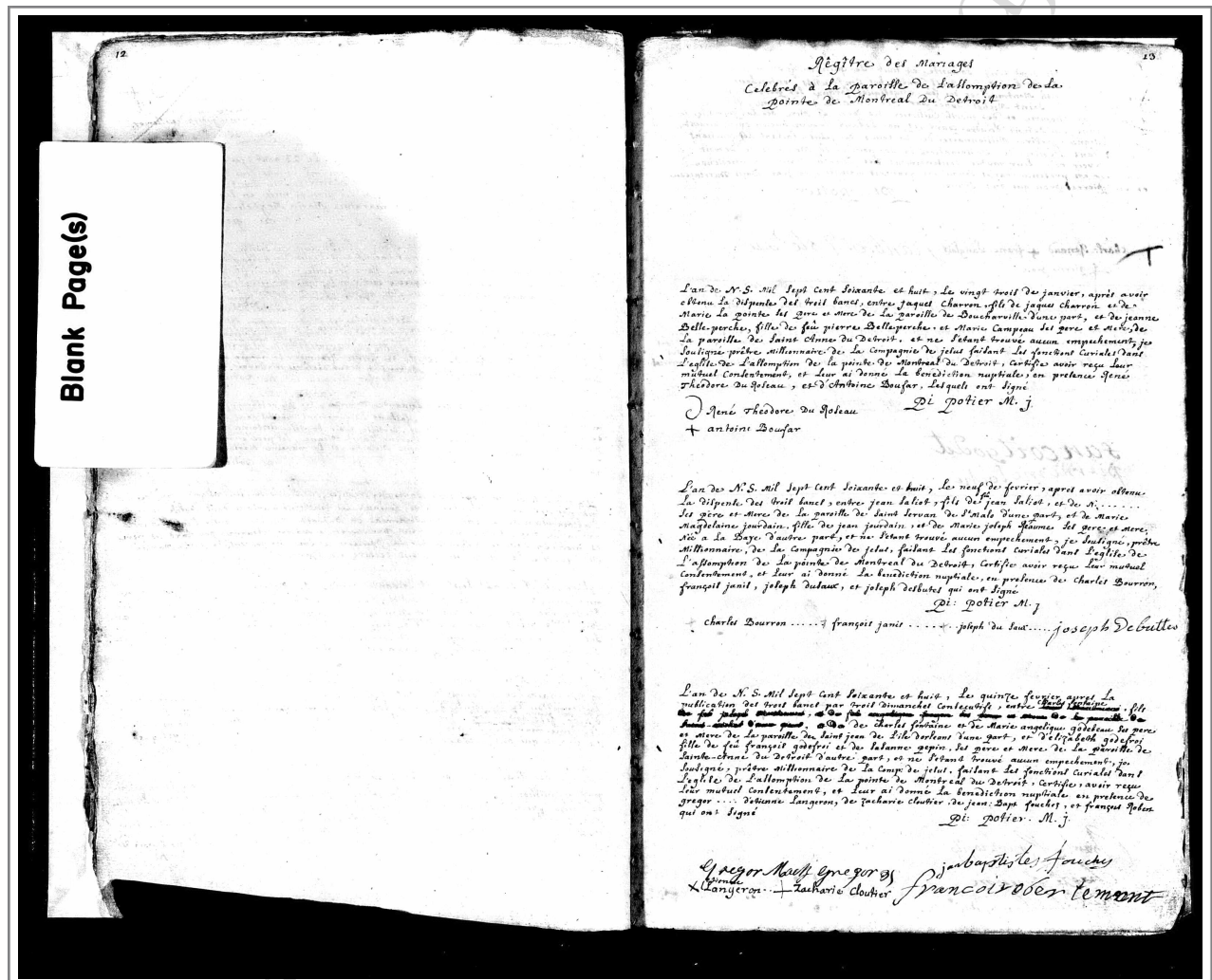


Baptismal record of Angelique Elizabeth (Dulignon dit) Lamirande, daughter of Joseph (Dulignon dit) Lamirande and Marie Angelique Saliot and mother of Matilda 'Tillie' Bondy, wife of Thomas Bondy.



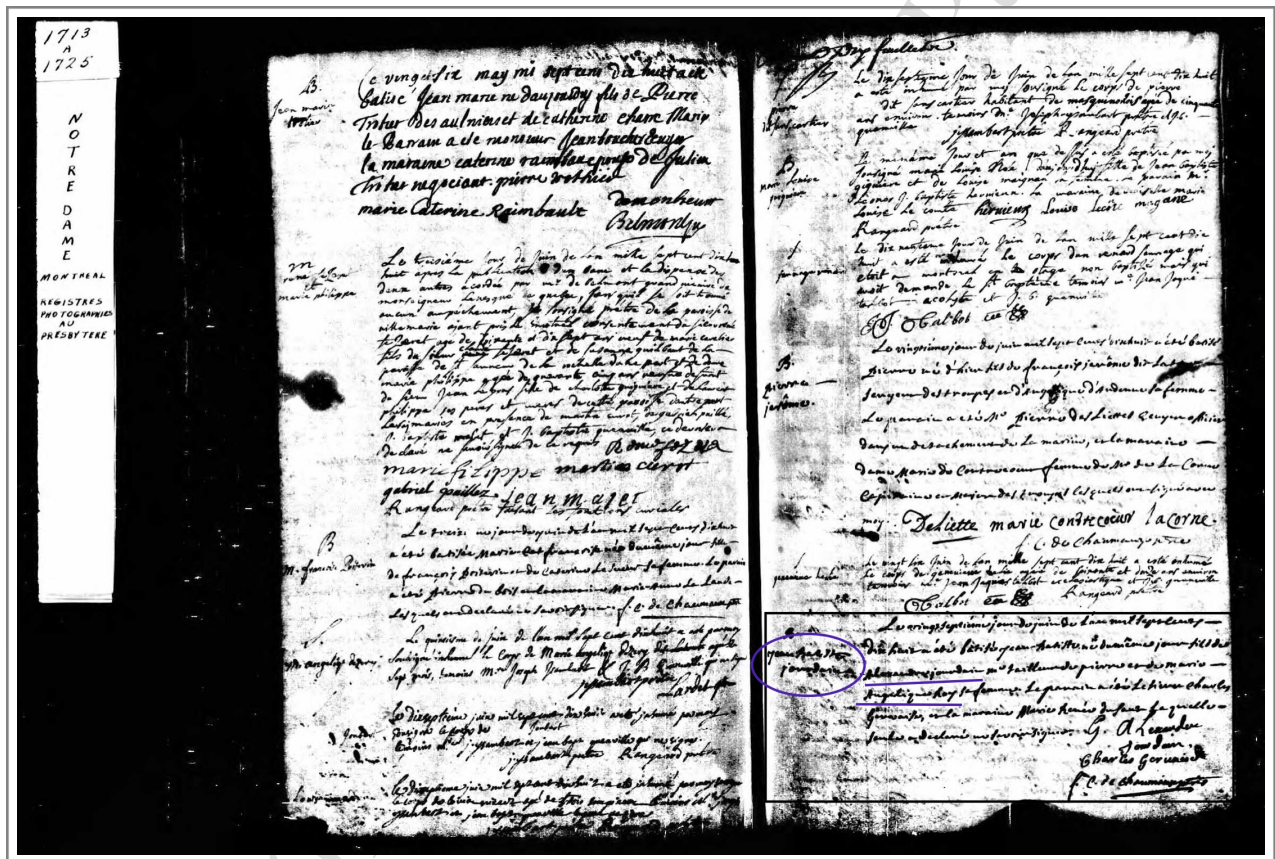
Marriage record of Joseph (Dulignon dit) Lamirande and (Marie-)Angelique Saliot. This record shows that the parents of Angelique Saliot were Jean-Baptiste Saliot and (Marie-)Madeleine Jourdain.

SYMPHOROSE OUAOUAGOUKOUÉ AND THE ORIGIN OF THE ILLINI

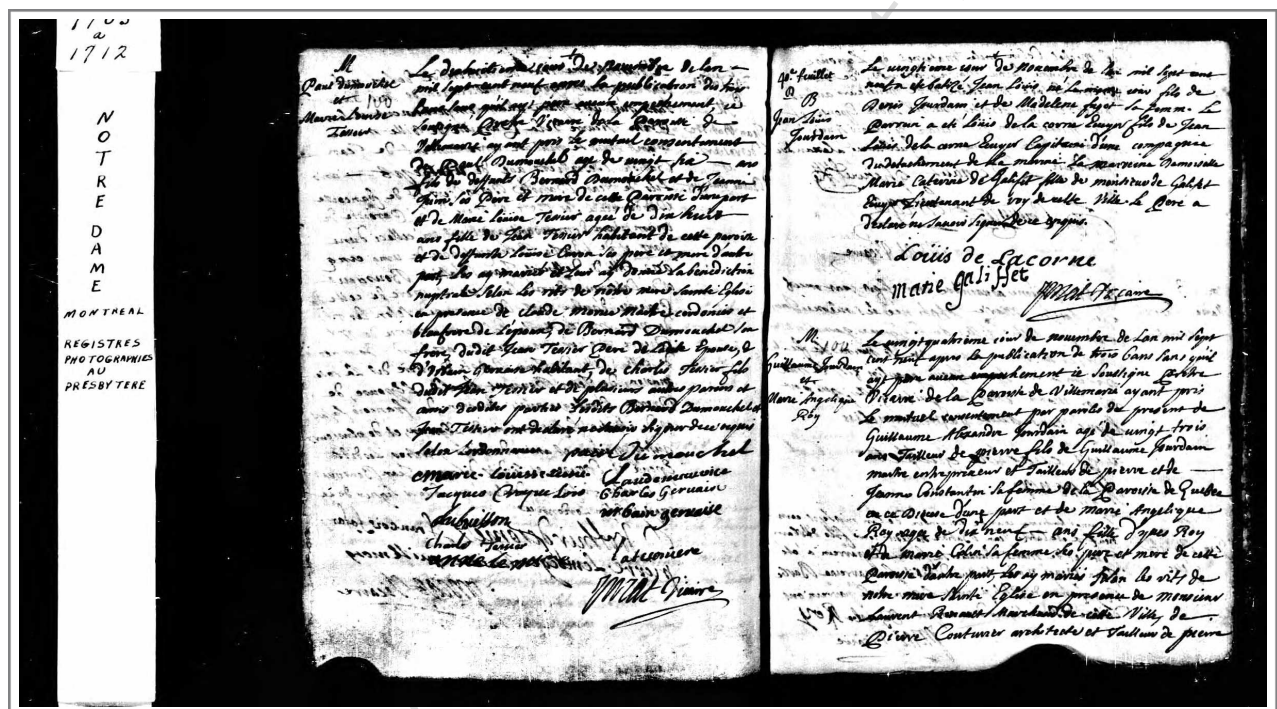


Marriage record of Jean(-Baptiste) Saliot and Marie Madeleine Jourdain. This record shows that the parents of Marie Madeleine Jourdain were Jean(-Baptiste) Jourdain and Marie Josephe Réaume. Note that in this marriage record, Jean(-Baptiste) Jourdain and his wife Marie Josephe Réaume are stated to have been residing at La Baye.

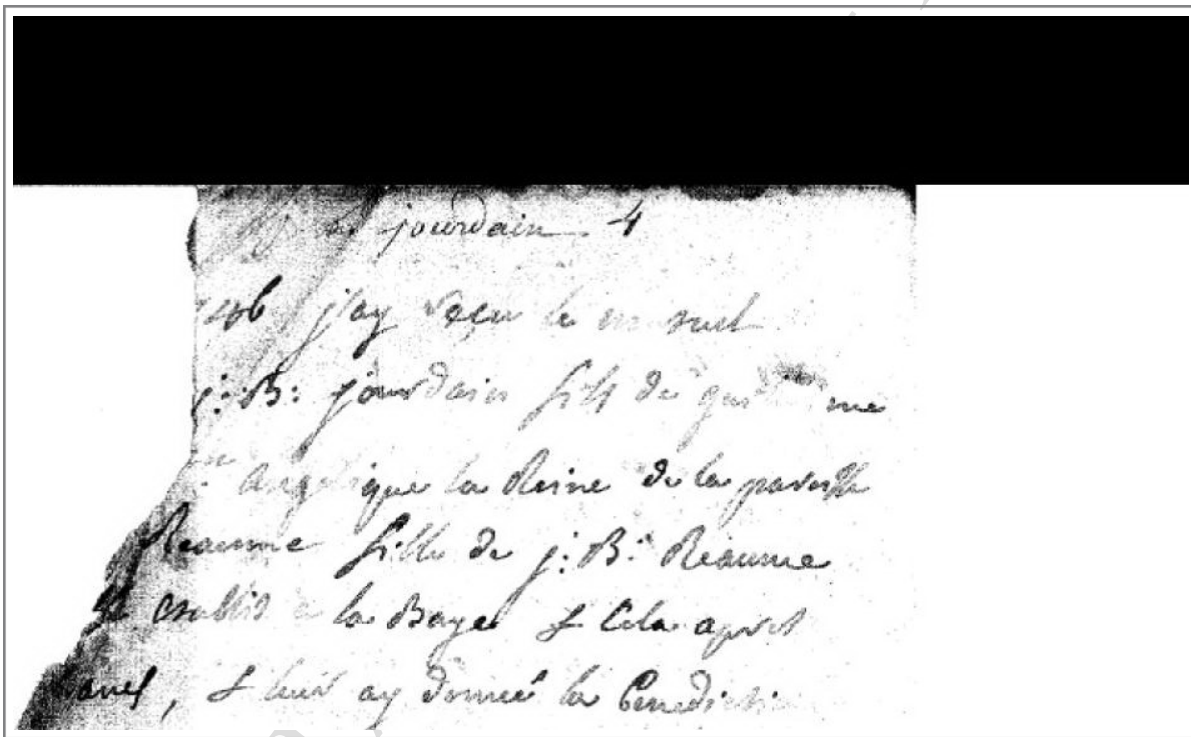
SYMPHOROSE OUAOUAGOUKOUÉ AND THE ORIGIN OF THE ILLINI



Baptismal record of Jean-Baptiste Jourdain, husband of Marie Josephe Réaume and son of Guillaume Alexandre Jourdain and Angelique Roy / La Reine. Note that Roy and Reine are exactly the same surname.



Marriage record of Guillaume Alexandre Jourdain and Marie Angelique Roy / La Reine, parents of Jean-Baptiste Jourdain, who was, of course, the husband of Marie Josephe Réaume.



Marriage record of Jean-Baptiste Jourdain and Marie Josephe Réaume. This record shows that the parents of Jean-Baptiste Jourdain were Guillaume (Alexandre) Jourdain and Angelique Roy / La Reine; and that (Marie Josephe) Réaume was the daughter of J. B. (Jean-Baptiste) Réaume of La Baye.

1725-1821]

Marriages at Mackinac

. . . 1746,³ I received the mutual [marriage] consent of [Jean] B. Jourdain, son of guillaume [Jourdain and of] Angelique la Reine, of the parish of . . . [and of] . . . Reaume, daughter of j. B. Reaume, residing at la Baye,⁴ * * *

P. DU JAUNAY, miss. of the Society of Jesus.
LOUIS PASCALE CHEVALIER.

. . . February, 1747. I Received the mutual marriage [consent] of Pierre Pelletier, son of pierre [Pelletier and] of charlotte arnaud, of the parish of Montreal; and of [fr]angoise Parent, daughter of Pierre Parent and of [an]ne Chaboiller, residents of this post, after dispensation from the publication of bans * * *

P. DU JAUNAY, miss. of the society of Jesus.

Witnesses, NOYELLE, fils; DENYS;⁵ PARANT; ANTOINE LA GUER^{DA}; JAN MARI FILI; CHABOILLEZ; CLOUDE CELORE [?]; LEMOINE

³ In the preceding entries we have given the complete phraseology, as found in the register—this, in order to exhibit the formal style of the original; but in the present and succeeding entries we have, to save space, eliminated mere repetitions of formal phrases, that convey no specific information concerning the event or the persons interested, and are the same for each entry. Such omissions are indicated by the use of three asterisks. In many of the succeeding entries, liberty has also been taken with the form of the date—the spelled-out style of most of the original entries being reduced to modern form: e. g., “the thirtieth day of the month of August of the year one thousand and seven hundred and forty-nine” is hereafter rendered, “August 30, 1749.” We have also, in our need of saving space in so bulky and repetitious a document, eliminated the name of the holy day, where occasionally given.—Ed.

⁴ These two families of Jourdain and Reaume appear to have been among the earliest permanent settlers at Green Bay.—Ed.

⁵ For these officers, the first of whom was commandant at Mackinac, and the second probably in command at Chequamegon, see *Wis. Hist. Colls.*, xvii, pp. 309, 462.—Ed.

[473]

Transcription of the above marriage record of Jean-Baptiste Jourdain and Marie Josephe Réaume.

Aujourd'hui
 du mariage de Charles
 de la fond & de Suzanne Réaume
 & de Suzanne Réaume
 Symphorose Ouagoukoué
 de Band une fois pour les
 21 ans. Plus le pouvoir que j'en ai
 la bénédiction nuptiale Plus et
 présence des témoins Puffignat. Par
 que de la. sp. du jour mil. d.
 OUTHIOZ Baptiste
 Courlonge
 J. B. tell

Marriage record of Suzanne Réaume and Charles Joseph
 Personne de la Fond (or Lafond Personne). This record shows
 that Suzanne was the daughter of Jean-Baptiste Réaume and
 Symphorose Ouagoukoué. Suzanne was the sister of Marie
 Josephe Réaume, wife of Jean-Baptiste Jourdain.

Wisconsin Historical Collections [vol. xviii]

July 1, 1747, I received the mutual marriage consent of Charles Personne de la Fond, son of the late Nicolas Personne de la Fond and of the late Madeline la Suse, of the parish of Montreal; and of Susanne Reaume, daughter of Jean Baptiste Reaume and of Symphorose ouaouaboukoue, residing at la Baye, after one publication of Bans instead of three, having granted dispensation from the two other publications * * *

P. DU JAUNAY, miss. of the society of Jesus.

AMIOT; BAPTISTE LE BEAUX; COULONGE, witnesses.

July 22, 1747, I Received the mutual marriage consent of Jean Baptiste Tellier de la fortune and of Marie Joseph, a ne-pissingue woman Baptized this morning, by which marriage were legitimized Antoine, 19 years old; François Xavier, 14 years old; Ann, ten years old; Ignace, 6 years old; Joseph, 3 years old; and Marie Joseph, 6 months old, their children * * *

P. DU JAUNAY, miss. of the society of Jesus.

JEAN BAPTISTE TELLIER; NOYELLE, fils; COULONGE; ANTOINE St. GERMAIN.

September 5, 1747, I received the mutual marriage consent of Joseph Guillory, son of Simon Guillory and of Marie de la Chapelle, of the parish of Montreal; and of Louise Bolon, daughter of Gabriel Bolon and of Susanne Manard, residents of this post —after three publications of Bans * * *

PÈRE LAMORINIE, society of Jesus.⁶

⁶ Jean Baptiste de la Morinie was born in Aquitaine (1705), and joined the Jesuits in 1725. In 1736 he came to Canada, and the second year thereafter was sent to Detroit, where entries in the parish register show his name for two years. He seems to have removed soon after to Mackinac, where he belonged to the mission of St. Ignace. The first entry of his name in the register is in 1741, the last in 1752. It would seem therefore that in this latter year he removed to St. Josephs, where he was missionary among the Potawatomi. About 1760 or 1761, impelled by destitution, he retired to the Illinois, where he

Transcription of the above marriage record of Suzanne Réaume and Charles (Joseph) Personne de la Fond.

The above records show that Marie Josephe Réaume was the daughter of Jean-Baptiste Réaume and Symphorose Ouaouagoukoué; and that Mary Susan Bondy, wife of Joseph Raymond, was a direct (matrilineal) descendant of Symphorose through her daughter Marie Josephe Réaume. Mary Bondy was, as said above, the paternal grandmother of Anne Amiot Lohman (née Raymond), mother of Susan Marie Amiot, who is, as I have already mentioned, my mother. This, then, is one line of our descent from Symphorose Ouaouagoukoué. I will now proceed to show the documents that prove that Thomas Bondy, husband of Matilda 'Tillie' Samantha Bondy, was also descended from Symphorose.

SYMPHOROSE OUAOUAGOUKOUÉ AND THE ORIGIN OF THE ILLINI

T-294.
TWELFTH CENSUS OF THE UNITED STATES.

State Michigan County Wayne Township or other division of county Bloom Name of Institution River Rouge Ward of city Theresa, Lilliette

Supervisor's District No. 181 Sheet No. 4
Enumeration District No. 181

Enumerated by me on the 4 day of June, 1900, Theodore Lilliette, Enumerator.

LOCATION.		NAME	RELATION.	PERSONAL DESCRIPTION.		NATIVITY.			CITIZENSHIP.	OCCUPATION, TRADE, OR PROFESSION.	EDUCATION.	SPEECH OF BIRTH.
18	19			DATE OF BIRTH.	20	21	22	23				
1	2	3	4	5	6	7	8	9	10	11	12	13
Charles St.	63	63	63	63	63	63	63	63	63	63	63	63
	63	63	63	63	63	63	63	63	63	63	63	63
	63	63	63	63	63	63	63	63	63	63	63	63
	63	63	63	63	63	63	63	63	63	63	63	63
	63	63	63	63	63	63	63	63	63	63	63	63
Charles St.	63	63	63	63	63	63	63	63	63	63	63	63
	63	63	63	63	63	63	63	63	63	63	63	63
	63	63	63	63	63	63	63	63	63	63	63	63
	63	63	63	63	63	63	63	63	63	63	63	63
	63	63	63	63	63	63	63	63	63	63	63	63
Charles St.	63	63	63	63	63	63	63	63	63	63	63	63
	63	63	63	63	63	63	63	63	63	63	63	63
	63	63	63	63	63	63	63	63	63	63	63	63
	63	63	63	63	63	63	63	63	63	63	63	63
	63	63	63	63	63	63	63	63	63	63	63	63

1900 Census of Michigan, Enumeration District 181, Sheet 4A showing the residents of Charles Street in the village of River Rouge. The purpose of sharing this record is to show that the families enumerated on Sheet 4B shown below, also lived on Charles Street.

SYMPHOROSE OUAOUAGOUKOUÉ AND THE ORIGIN OF THE ILLINI

T-204.

TWELFTH CENSUS OF THE UNITED STATES.

8372
B

State Michigan County Wayne Supervisor's District No. 181 Sheet No. 4

Township or other division of county Corse Name of Institution, _____

Name of incorporated city, town, or village, within the above-named division, River Rouge Village Ward of city, _____

Enumerated by me on the 4 day of June, 1900, Theodore Calverth Enumerator.

LOCATIONS.	NAME	RELATION.	PERSONAL DESCRIPTION.	NATIVITY.			CITIZENSHIP.	OCCUPATION, TRADE, OR PROFESSION.	EDUCATION.					FREEDOM OF BIRTH.
				Place of birth of this person.	Place of birth of father of this person.	Place of birth of mother of this person.			Years of attendance in school.	Years of attendance in college.	Years of attendance in university.	Years of attendance in law school.		
72 72	Wright, Clara	Daughter	W. F. Wright 1873-8	Michigan	Canada	Michigan		House Work	0	yes	yes			
	Bey	Son	W. M. Bey 1881-5					Mill Labor	3	yes	yes			
	John	Son	W. M. John 1882-5					at School		yes	yes			
	Matilda Bondy	Head	W. M. Bondy 1848-5	Michigan	Mich			Carpenter	6	yes	yes	R	H	
73 73	Bondy, James	Head	W. M. Bondy 1848-5	Michigan	Canada	Canada		Mill Labor	3	yes	yes	R	H	
	Matilda	Wife	W. F. Bondy 1848-5	Michigan	Michigan	Michigan				yes	yes			
	George	Son	W. M. Bondy 1871-5		Canada				4	yes	yes			
74 74	Marcel	Head	W. M. Marcel 1868-5	Canada	France	Canada	1880-0	Mill Labor	1	yes	yes	W	M	H
	Charles	Wife	W. F. Marcel 1868-5	Michigan	Michigan	Michigan				yes	yes			
	John	Son	W. M. Marcel 1880-5		Canada			at School		yes	yes			
	Edward	Son	W. M. Marcel 1882-5							yes	yes			
	Joseph	Son	W. M. Marcel 1884-5							yes	yes			
	Charles	Son	W. M. Marcel 1886-5							yes	yes			
	Francis	Son	W. M. Marcel 1888-5							yes	yes			
	Robert	Son	W. M. Marcel 1890-5							yes	yes			
74 75	Mat	Head	W. M. Mat 1868-5	Michigan	England	France		Labor	3	yes	yes	R	H	
	John	Son	W. M. Mat 1870-5		Canada					yes	yes			
	Robert	Son	W. M. Mat 1872-5		Michigan	Michigan				yes	yes			
	Robert	Son	W. M. Mat 1874-5							yes	yes			
	Robert	Son	W. M. Mat 1876-5							yes	yes			
75 76	Bigou, Marie	Head	W. M. Bigou 1868-5	Michigan	Canada	Canada		Mill Labor	9	yes	yes	W	M	H
75 76	John	Wife	W. F. Bigou 1868-5		Canada					yes	yes			
	John	Son	W. M. Bigou 1870-5		Michigan	Michigan				yes	yes			
	John	Son	W. M. Bigou 1872-5							yes	yes			
76 77	Lochore, John	Head	W. M. Lochore 1868-5	Michigan	Canada	Canada		Labor	0	yes	yes	W	M	H
	John	Wife	W. F. Lochore 1868-5		Michigan	Michigan				yes	yes			
	John	Son	W. M. Lochore 1870-5		Canada	Canada		Farmer	0	yes	yes			
	John	Son	W. M. Lochore 1872-5		Michigan	Michigan				yes	yes			
	John	Son	W. M. Lochore 1874-5							yes	yes			
	John	Son	W. M. Lochore 1876-5							yes	yes			
77 78	McLean, Robert	Head	W. M. McLean 1868-5	Michigan	Canada	Canada	1881-2	Farmer	4	yes	yes	R	H	
	Robert	Wife	W. F. McLean 1868-5		Ireland	Ireland				yes	yes			
	Robert	Son	W. M. McLean 1870-5		Canada	Canada				yes	yes			
	Robert	Son	W. M. McLean 1872-5							yes	yes			
	Robert	Son	W. M. McLean 1874-5							yes	yes			
	Robert	Son	W. M. McLean 1876-5							yes	yes			
78 79	Manore, Francis	Head	W. M. Manore 1868-5	Canada	Canada	Canada	1880-0	Mill Labor	6	yes	yes	R	H	
	Manore	Wife	W. F. Manore 1868-5		Michigan	Michigan	1880-0			yes	yes			
	John	Son	W. M. Manore 1870-5				1880-0	Mill Labor	6	yes	yes			
79 80	John	Head	W. M. John 1868-5	Michigan	Canada	Canada		Mill Labor	0	yes	yes	R	H	
	John	Wife	W. F. John 1868-5							yes	yes			
	John	Son	W. M. John 1870-5		Michigan	Michigan				yes	yes			
	John	Son	W. M. John 1872-5							yes	yes			
	John	Son	W. M. John 1874-5							yes	yes			
80 81	Palmer, W. J.	Head	W. M. Palmer 1868-5	Canada	Canada	Canada	1881-2	Carpenter	8	yes	yes	R	H	
	W. J.	Wife	W. F. Palmer 1868-5		Canada	Canada	1881-2			yes	yes			
	W. J.	Son	W. M. Palmer 1870-5				1881-2	Mill man		yes	yes	R	H	
81 82	Denno, J. P.	Head	W. M. Denno 1868-5	Michigan	Mich	Michigan				yes	yes			
	Denno	Wife	W. F. Denno 1868-5							yes	yes			
	Denno	Son	W. M. Denno 1870-5					House Work		yes	yes			
	Denno	Son	W. M. Denno 1872-5					at School		yes	yes			

1900 Census of Michigan, Enumeration District 181, Sheet 4B showing the residents of Charles Street. This record shows that Thomas Bondy and Matilda Bondy were living on Charles Street in 1900, in the village of River Rouge, and had living with them their son George Bondy.

SYMPHOROSE OUAOUAGOUKOUÉ AND THE ORIGIN OF THE ILLINI

**MICHIGAN
DEPARTMENT OF STATE
LANSING
VITAL STATISTICS DIVISION.**

[The Registrar should number each certificate received and enter the number below. No. 1 of the first Series in each year.] **390**

CERTIFICATE AND RECORD OF DEATH.

Place of death: County Wayne, Township Ecorse, Village River Rouge, City Charles, Location Charles, Ward, St. St.

Full Name Thos Bondy Date of Death Feb 23 1903

Single, married, widowed or divorced Married Sex Male Color White

If married, age at first marriage 20 years. Age 67 YEARS MONTHS DAYS 6 6 9

Parent of 12 children of whom 7 are living. Date of birth 1839 YEAR MONTH DAY Sept 18

Occupation Labourer

Name of father Laurence Bondy Birthplace of father (State or country) Canada Birthplace of mother (State or country) Canada

Name of mother Matilda Campau Birthplace of mother (State or country) Canada

Date of burial or removal Feb 26 1903 Place of burial or removal Ecorse

Signature of undertaker T P Sullivan Address of undertaker Wayne

Medical Certificate of Cause of Death.

I hereby certify that I attended deceased from July 5 1902 to Feb 23 1903 that I last saw him alive on Feb 23 1903 that he died on Feb 23 1903 about 11-30 o'clock P M., and that to the best of my knowledge and belief the CAUSE OF DEATH was as hereunder written:

DISease CAUSING DEATH * Cirrhosis of the liver DURATION OF EACH CAUSE 9 mos

Immediate cause of death * exhaustion

Contributory causes or complications, if any * dropsy

Post-mortem _____ Place where DISEASE CAUSING DEATH was contracted, if other than place of death. _____

* Physicians are requested to note the "Suggestions to Physicians Relative to Statement of Causes of Death" on the back of this certificate.

In Violent Deaths, a different form of statement is necessary, as follows:

(1) Mode of injury and whether accidental, suicidal or homicidal;

(2) Nature of injury (immediate cause of death);

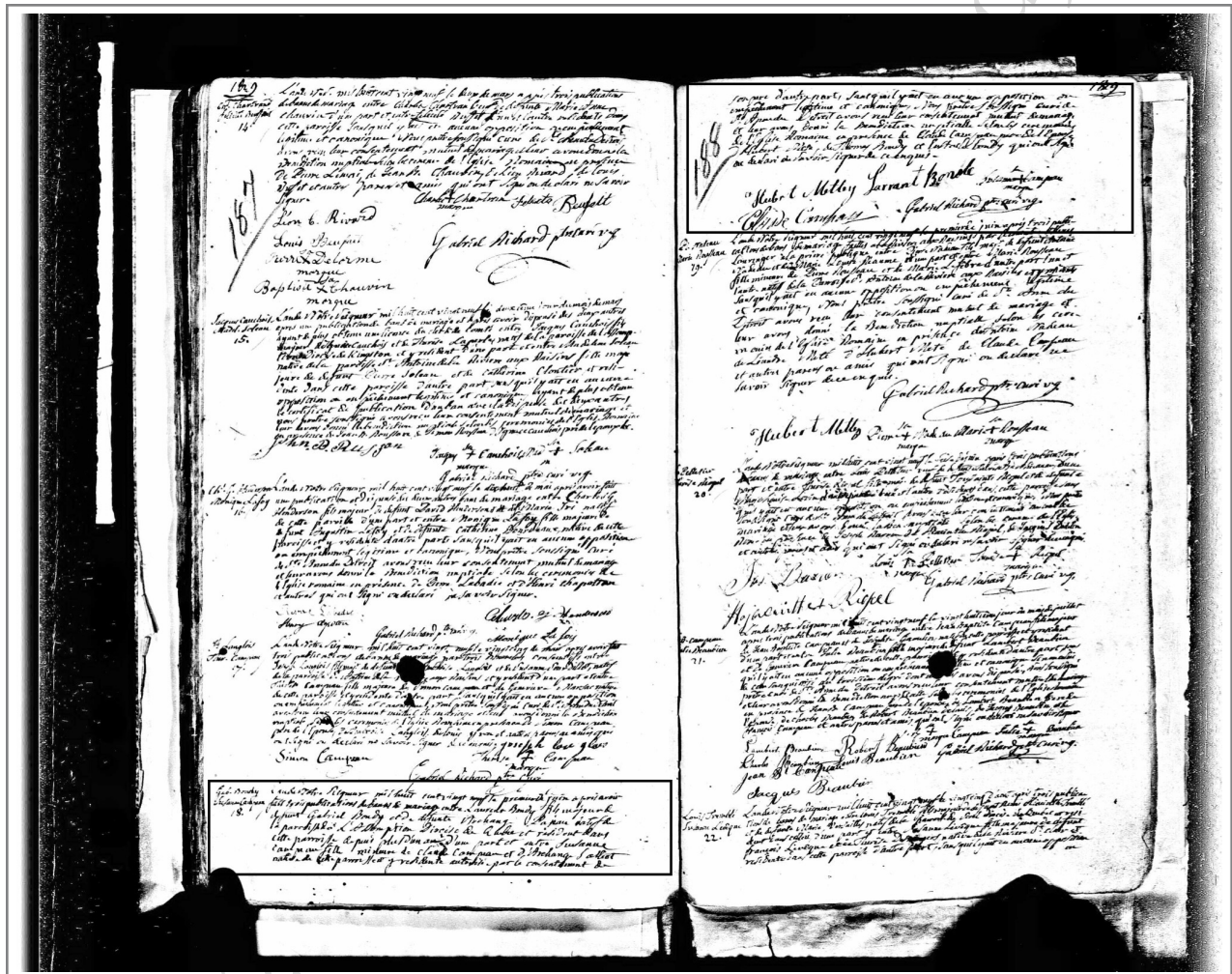
(3) Contributory causes.

Witness my hand this 24th day of Feb 1903

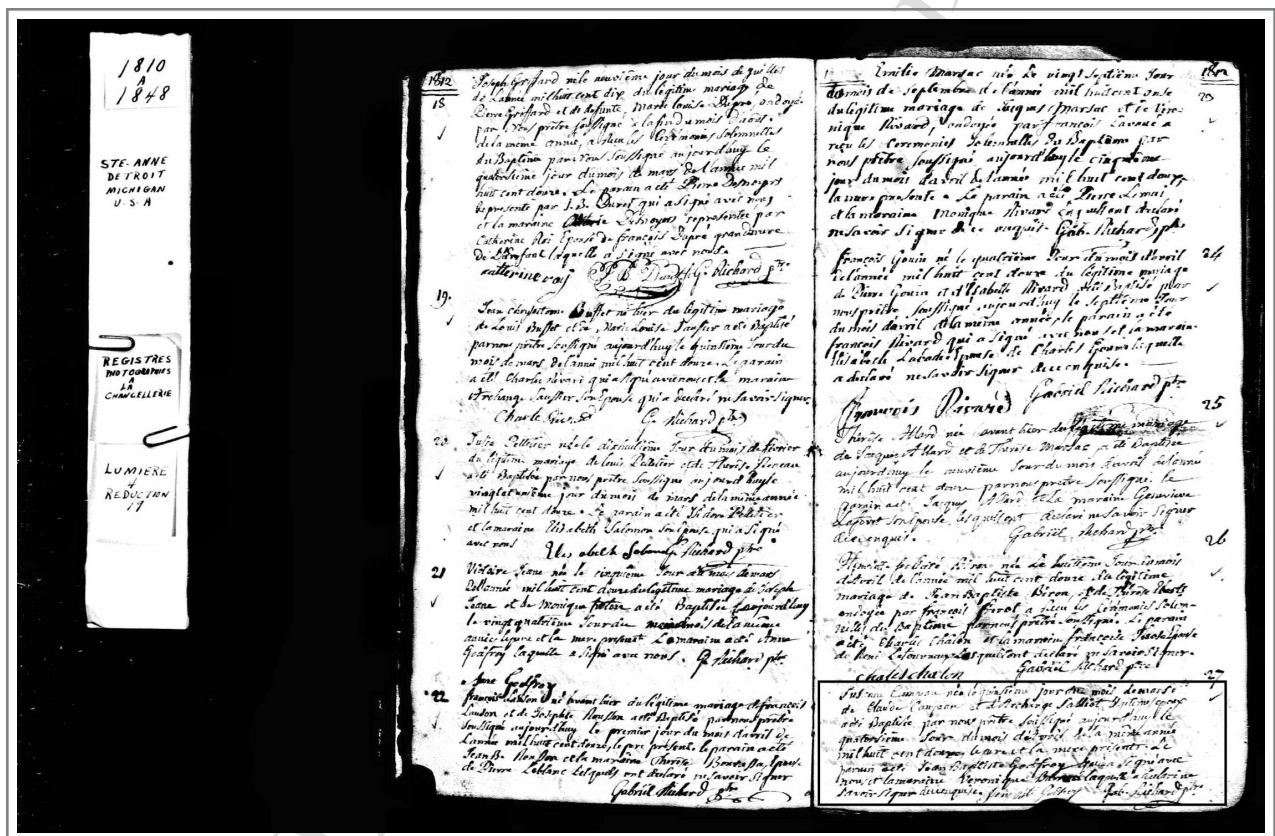
Signature of physician, health officer or coroner W Belanger M. D.

(Address) River Rouge

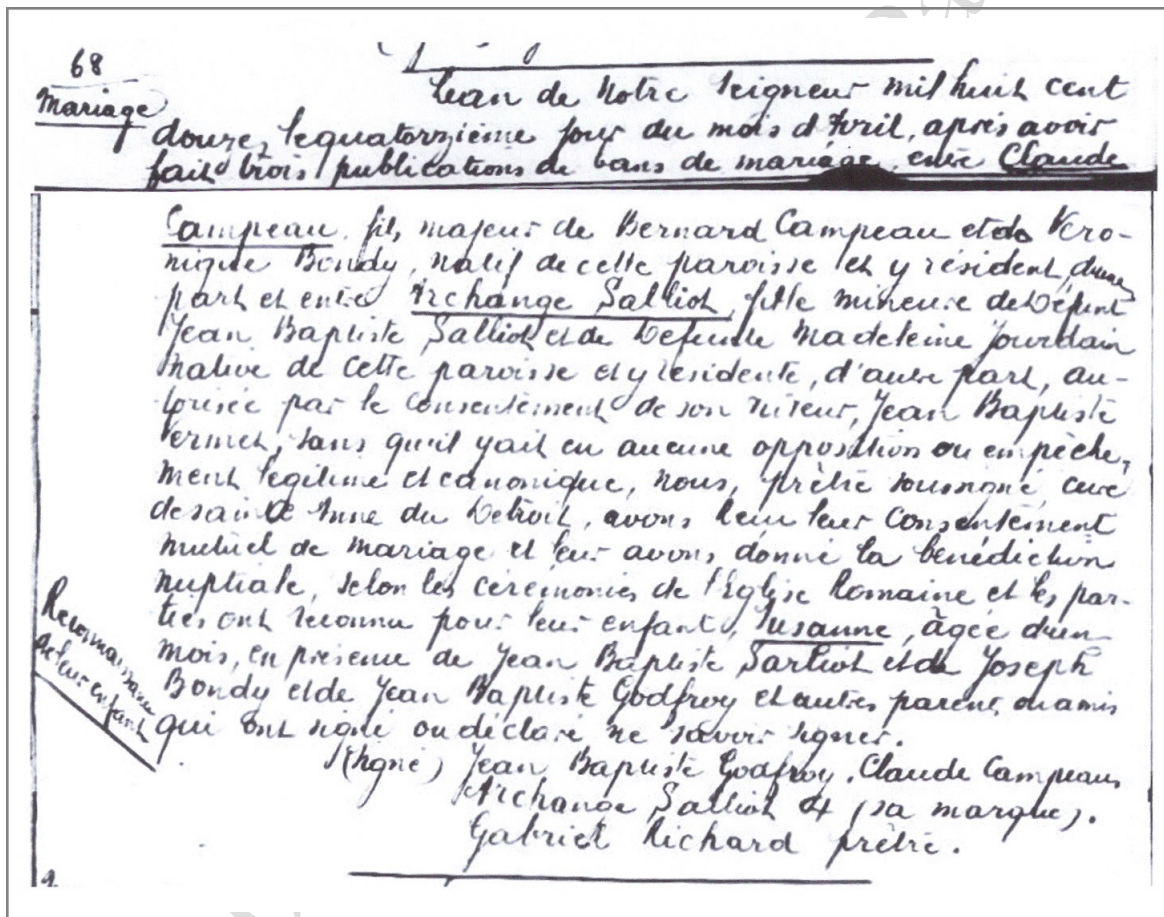
Death record of Thomas Bondy, husband of Matilda Bondy. This record shows that at the time of his death in 1903, Thomas was living in River Rouge on Charles Street, just as the 1900 census record above shows that he was living with his wife Matilda on Charles Street. This record also shows, of course, that Thomas was the son of Laurence Bondy and Suzanne Campau.



Marriage record of Laurence (Douaire de) Bondy and Suzanne Campau. This record shows that Laurence was the son of Gabriel Bondy (whose name was mistakenly written in the margin) and (Marie-)Archange Pageot; and it shows that Suzanne was the daughter of Claude Campau and Archange Saliot.



Baptismal record of Suzanne Campau, wife of Laurence Bondy. This record, like the marriage record just above, shows that Suzanne was the daughter of Claude Campau and Archange Saliot.

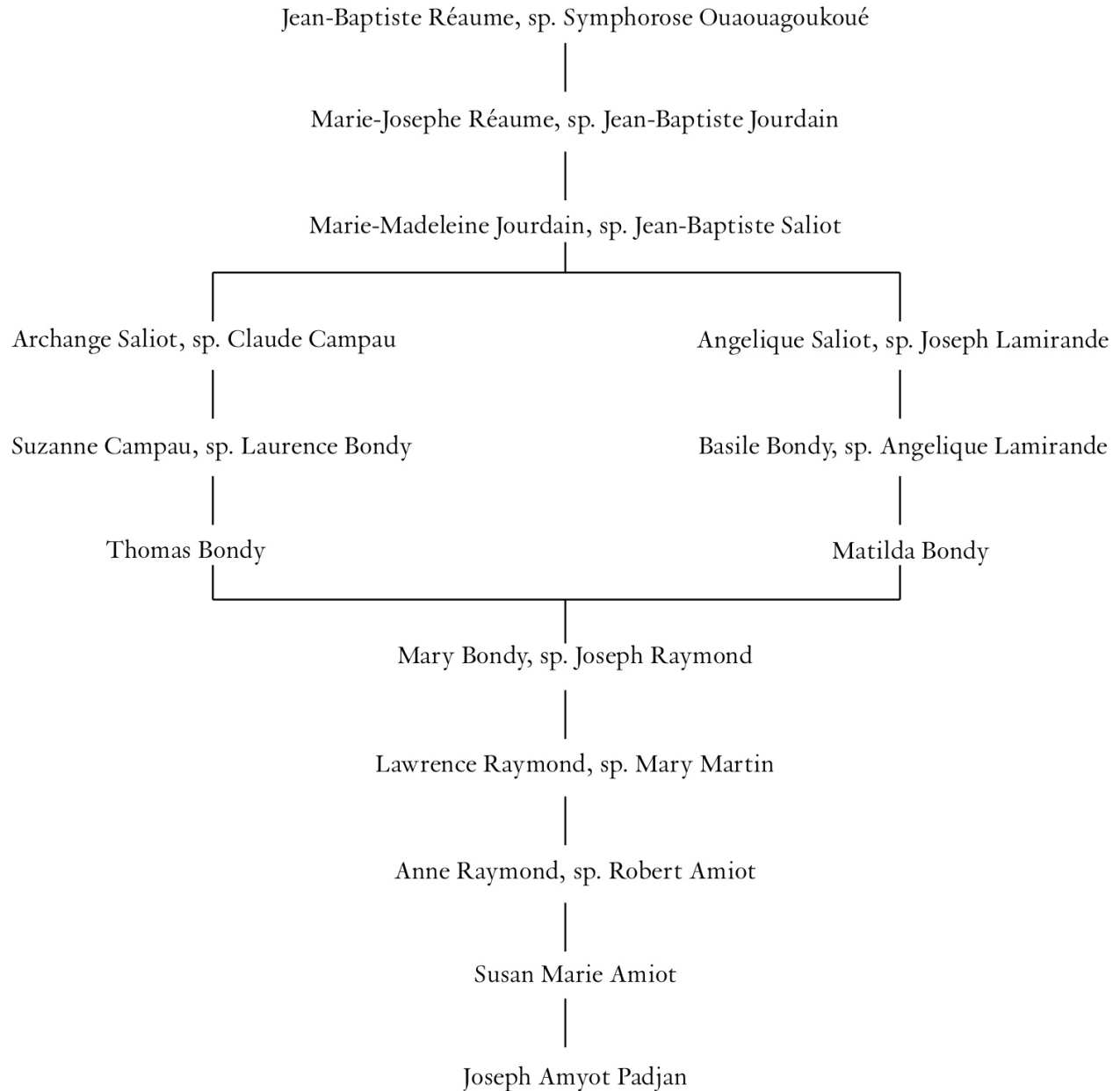


Marriage record of Claude Campau and Archange Saliot. This record shows that Archange was the daughter of Jean-Baptiste Saliot and (Marie-)Madeleine Jourdain. As shown above, Jean-Baptiste Saliot and (Marie-)Madeleine Jourdain were also the parents of (Marie-)Angelique Saliot, wife of Joseph (Dulignon dit) Lamirande.

Marie Madeleine Jourdain, as shown above, was the daughter of Jean-Baptiste Jourdain and Marie Josephe Réaume; and, as I have shown, Marie Josephe Réaume was the daughter of Jean-Baptiste Réaume and Symphorose Ouaouagoukoué. Thus, Thomas Bondy, husband of Matilda Bondy, was, like his wife Matilda, as shown above, descended from Symphorose Ouaouagoukoué; and Thomas was descended from her through his mother Suzanne Campau.

Below is a pedigree showing the descendants of Symphorose Ouaouagoukoué discussed in this paper, those descendants of hers for whom I have provided documentation to show their descent from her.

SYMPHOROSE OUAOUAGOUKOUÉ AND THE ORIGIN OF THE ILLINI



Anne Raymond first married Robert Amiot; she second married Jack Lohman; and her middle name is Therese. Thus, in this paper, I have written her name variously as 'Anne Therese Amiot Lohman (née Raymond),' and so forth. Also, as already mentioned in this paper, the full name of my Bondy ancestors was Douaire de Bondy; and the full name of my Lamirande ancestors was Dulignon dit Lamirande. Later, Douaire was dropped, as was Dulignon.